

DALY UNIT No. 3
PROGRESS REPORT
January 1 to December 31, 2011

Enerplus Corporation
Manitoba Team
February 2012

Table of Contents

Table of Contents 2

List of Tables and Figures..... 2

Introduction..... 3

Discussion 3

List of Tables and Figures

Figure 1	Daly Unit No. 3 Map
Figure 2	Pattern Map
Table 1	Well Servicing Report
Table 2	2011 Pressure Surveys
Table 3	Waterflood Patterns and Corresponding Injectors
Table 4	Production, Injection Data and VRR for the Unit
	Production, Injection Data and VRR for individual patterns

Introduction

Daly Unit No. 3 became effective July, 1976. This report summarizes the operations of the Unit for the period from January 1 to December 31, 2011 and discusses the performance of the waterflood to date. The area map of the Daly Unit No. 3 is shown in Figure 1.

Discussion

Oil Production

In 2011, oil production rate for the Unit averaged 54.4 sm³/d with a WOR of 4.12 sm³/ sm³. A list of well servicing jobs in 2011 is shown in Table 1.

Total oil production in 2011 is 19,844 sm³. Cumulative oil since commencement of production is 2,079 sE3m³. Details of the production data are shown in Table 4 as well as graphically in the attached figures.

Water Injection

Average water injection rate for the Unit in 2011 was 221 sm³/d. There were no conversions in the Unit during 2011.

Cumulative water injected to December 31, 2011 is 6,844 sE3m³. Details of the water injection data are also shown in Table 4 as well as the attached figures.

Voidage

The total project voidage during 2011 was 103 rE3rm³, resulting in the voidage replacement ratio (VRR) of 0.78. It is important to note that there is an aquifer of moderate strength providing pressure support to the north side of the Unit, near Section 23-010-28W1M. The VRR calculation does not account for the water influx as it is difficult to quantify. The total produced water is injected back into the reservoir (Daly Unit 3) and is included in the injection volume for voidage calculations.

Cumulative total voidage from commencement of production to December 31, 2011 is 5,309 rE3m³ and the cumulative VRR is 1.29. The oil formation volume factor used in the pattern voidage calculations is 1.0687 rm³/stm³ based on recent PVT work done. Detailed voidage calculations are shown in Table 4 (except for patterns that have been shut-in for long periods).

Reservoir Pressure

In 2011, reservoir pressure has been recorded in 3 wells. Two (2) pressure tests were static gradients and the remaining one (1) test was AWS (Acoustic Well Sounder) build-up measurements. The pressures range widely, depending on the well voidage replacement history. It should be noted that the initial reservoir pressure is estimated as 6585 kPaa and the bubble point pressure as 1517 kPaa.

Based on the available pressure tests, the average reservoir pressure in the Unit in 2011 is 9092 kPa. A summary of the pressure data is given in Table 2.

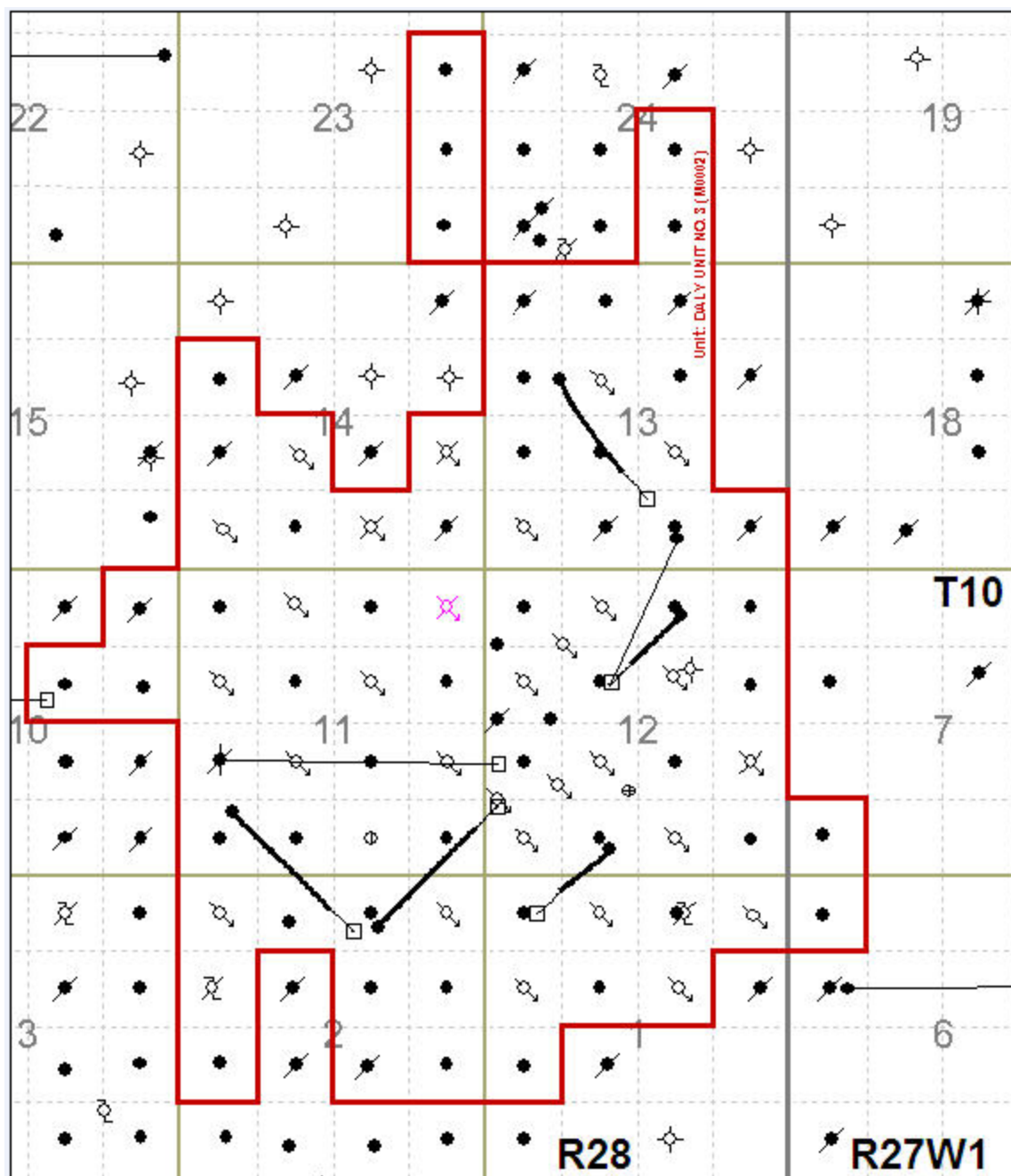
Recovery

Based on the current estimated OOIP of 9,380 sE3m³, recovery to year-end 2011 is 22.2%.

Waterflood Patterns

The Daly Unit No. 3 waterflood was developed mainly as inverted 5-spot patterns, which are still considered to be the waterflood patterns over a large area in the Unit. However, there are a few patterns that are exceptions: infill injectors were drilled in an attempt to partially convert to a line drive (B0/05-12, A0/05-12 and B0/14-12); 00/16-02, 00/02-11, 02/06-11, 00/10-12, 00/14-12, 00/04-13 and 00/06-14 etc (inverted 6-spots). The current waterflood patterns map is shown in Figure 2.

A list of waterflood patterns and corresponding injectors is given in Table 3. Table 4 provides detailed production, injection, pressure and voidage for each pattern.



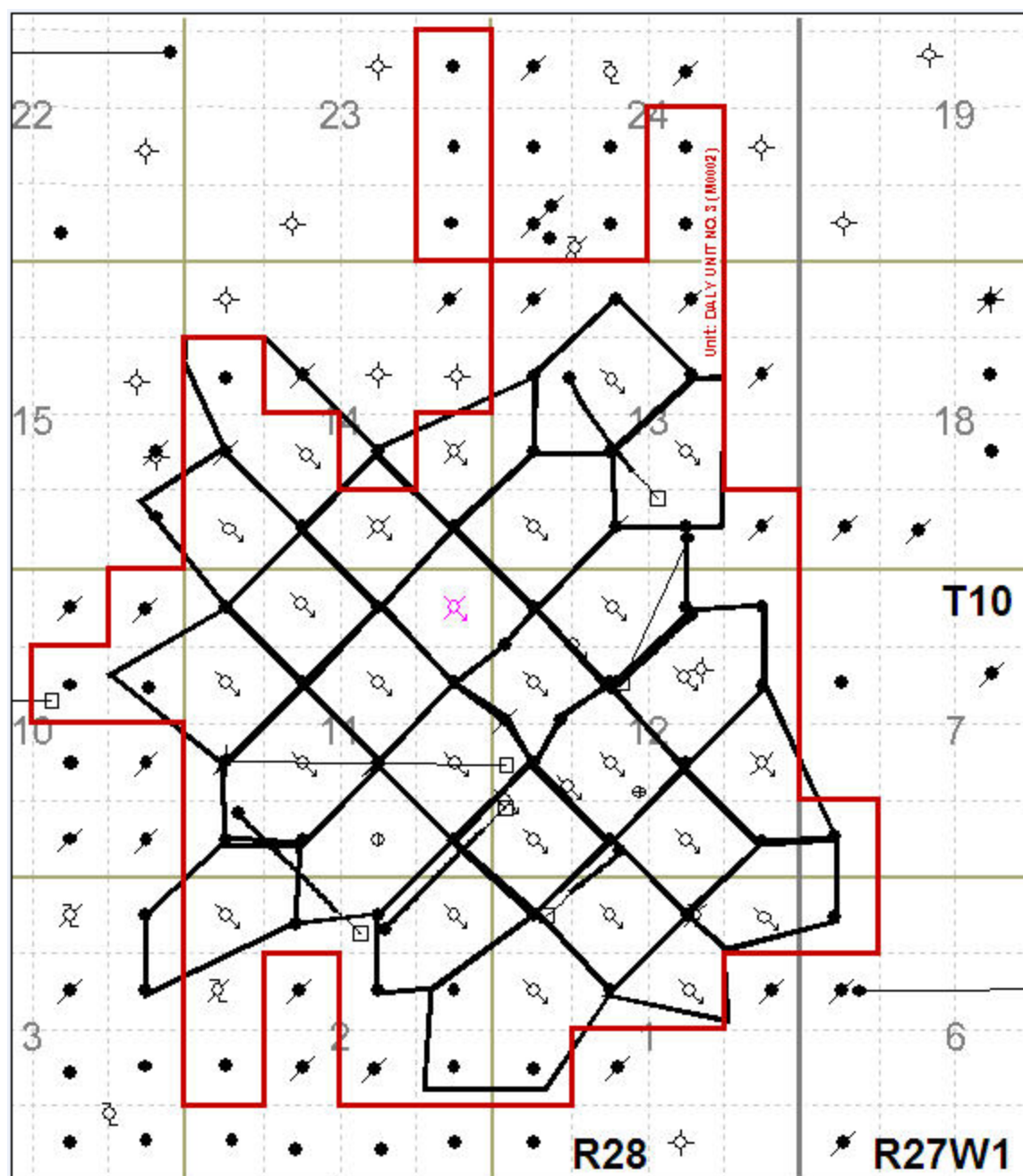


Table 1: Well Servicing Report

UWI	Start Date	Type	Objective
102/05-11-010-28w1	23-Feb-11	Workover	Water shut off program.
102/04-11-010-28w1	5-Mar-11	Workover	Acid job on lateral leg. Estimate based on 11 m3 from 102/12-20 12 m3 acid, vs 25 m3 acid).
102/12-10-010-28w1	7-Jul-11	Workover	Approved May 25, 2011 (partners). Poor lease access.
100/08-11-010-28w1	8-Sep-11	Maintenance	Performed gradient.
100/04-12-010-28w1	8-Sep-11	Maintenance	Performed gradient.
100/16-02-010-28w1	12-Sep-11	Maintenance	Tubing string required replacement
100/13-11-010-28w1	2-Nov-11	Maintenance	Hole in joint #75, replace 14 joints, and pump.
102/15-02-010-28w1	5-Dec-11	Workover	89" stroke BHP, 76" max stroke P/J, Have to tap or will unseat pump
102/12-13-010-28w1	11-Dec-11	Workover	
102/15-12-010-28w1	14-Dec-11	Workover	

Table 2: 2011 Pressure Surveys

UWI	Test Date	Test Type	Shut-In Since	BH Pressure (kPaa)
100/05-01-010-28W1/00	10-Aug-11	AWS Build-Up	1-May-09	6,467
100/08-11-010-28W1/00	8-Sep-11	Static Gradient	15-Aug-10	10,919
100/04-12-010-28W1/00	8-Sep-11	Static Gradient	15-May-03	9,889
Average Reservoir Pressure in 2011 ---->				9,092

Table 3: Waterflood Patterns and Corresponding Injectors

Pattern	Well
PAT 02-11	100/02-11-010-28W1/00
PAT 02-12	100/02-12-010-28W1/00
PAT 04-12	100/04-12-010-28W1/00
PAT 04-12	1B0/05-12-010-28W1/00
PAT 04-13	100/04-13-010-28W1/00
PAT 04-14	100/04-14-010-28W1/00
PAT 06-11	100/06-11-010-28W1/00
PAT 06-12	100/06-12-010-28W1/00
PAT 06-12	1A0/05-12-010-28W1/00
PAT 06-14	100/06-14-010-28W1/00
PAT 07-13	100/07-13-010-28W1/00
PAT 08-11	100/08-11-010-28W1/00
PAT 08-12	100/08-12-010-28W1/00
PAT 10-01	100/10-01-010-28W1/00
PAT 10-11	100/10-11-010-28W1/00
PAT 10-12	100/10-12-010-28W1/00
PAT 11-13	100/11-13-010-28W1/00
PAT 12-01	100/12-01-010-28W1/00
PAT 12-11	100/12-11-010-28W1/00
PAT 12-12	100/12-12-010-28W1/00
PAT 13-02	100/13-02-010-28W1/00
PAT 14-01	100/14-01-010-28W1/00
PAT 14-11	100/14-11-010-28W1/00
PAT 14-12	100/14-12-010-28W1/00
PAT 14-12	1B0/14-12-010-28W1/00
PAT 16-01	100/16-01-010-28W1/00
PAT 16-02	100/16-02-010-28W1/00

Table 4

Daly Unit #3

Total For Unit

Date	Monthly Oil Prod sm3	Oil Rate (CD) sm3/d	Monthly Water Prod sm3	Water Rate (CD) sm3/d	Water Oil Ratio	Monthly Water Inj sm3	Water Inj Rate (CD) sm3/d	Water Inj Pressure kPa	Voidage Replacement Ratio	Cum Voidage Replacement Ratio
1/31/2011	1644.5	54.10	6982.3	229.68	4.25	6921.0	227.66	5297	0.79	1.31
2/28/2011	1483.7	48.81	6332.3	208.30	4.27	6274.5	206.40	5297	0.79	1.31
3/31/2011	1648.8	54.24	6918.6	227.59	4.20	6839.0	224.97	5310	0.79	1.31
4/30/2011	1574.6	51.80	6657.9	219.01	4.23	6630.5	218.11	5692	0.79	1.31
5/31/2011	1633.5	53.73	6670.8	219.43	4.08	6630.5	218.11	5853	0.79	1.31
6/30/2011	1713.9	56.38	6710.4	220.74	3.92	6630.5	218.11	5859	0.78	1.30
7/31/2011	1592.4	52.38	7398.0	243.36	4.65	7372.5	242.52	6042	0.81	1.30
8/31/2011	1824.3	60.01	7401.4	243.47	4.06	7369.5	242.42	6042	0.79	1.30
9/30/2011	1744.1	57.37	6383.3	209.98	3.66	6420.7	211.21	5675	0.78	1.30
10/31/2011	1692.7	55.68	5882.2	193.49	3.48	5778.9	190.09	5781	0.75	1.30
11/30/2011	1632.6	53.70	6909.5	227.29	4.23	6692.2	220.14	5936	0.77	1.30
12/31/2011	1659.1	54.58	7429.2	244.38	4.48	7061.2	232.28	6060	0.77	1.29
Cumulative Oil Produced (E3m3)					2078.71					
Cumulative Water Produced (E3m3)					3045.07					
Cumulative Water Injected (E3m3)					6843.98					
Cumulative Voidage Replacement Ratio					1.29					

Table 4
Daly Unit #3
Pattern: PAT 02-11

Date	Monthly Oil Prod M3	Oil Rate (CD) m3/d	Monthly Water Prod m3	Water Rate (CD) m3/d	Water Oil Ratio m3/m3	Monthly Water Inj m3	Water Inj Rate (CD) m3/d	Water Inj Pressure kPa	Voidage Replacement Ratio	Cum Voidage Replacement Ratio
1/31/2011	98.7	3.18	19.5	0.63	0.20			5500	0.00	1.85
2/28/2011	89.1	3.18	17.9	0.64	0.20			5500	0.00	1.85
3/31/2011	98.4	3.17	19.4	0.63	0.20	420.0	13.55	5516	3.37	1.85
4/30/2011	94.3	3.14	19.1	0.64	0.20	381.0	12.70	6000	3.18	1.86
5/31/2011	97.9	3.16	18.9	0.61	0.19	381.0	12.29	6000	3.08	1.86
6/30/2011	112.3	3.74	19.0	0.63	0.17	381.0	12.70	6017	2.74	1.86
7/31/2011	118.6	3.82	21.5	0.69	0.18	381.0	12.29	6500	2.57	1.86
8/31/2011	140.3	4.53	25.5	0.82	0.18	381.0	12.29	6500	2.17	1.86
9/30/2011	135.0	4.50	23.6	0.79	0.17	205.4	6.85	6497	1.22	1.86
10/31/2011	120.0	3.87	23.8	0.77	0.20	211.8	6.83	6377	1.39	1.86
11/30/2011	115.2	3.84	23.2	0.77	0.20	309.4	10.31	5690	2.12	1.86
12/31/2011	115.7	3.73	23.3	0.75	0.20	320.2	10.33	5400	2.18	1.86

Cumulative Oil Produced (E3m3)	90.00
Cumulative Water Produced (E3m3)	17.71
Cumulative Water Injected (E3m3)	211.40
Cumulative Voidage Replacement Ratio	1.96

Table 4
Daly Unit #3
Pattern: PAT 02-12

Date	Monthly Oil Prod M3	Oil Rate (CD) m3/d	Monthly Water Prod m3	Water Rate (CD) m3/d	Water Oil Ratio m3/m3	Monthly Water Inj m3	Water Inj Rate (CD) m3/d	Water Inj Pressure kPa	Voidage Replacement Ratio	Cum Voidage Replacement Ratio
1/31/2011	34.7	1.12	39.4	1.27	1.13	1022.0	32.97	6800	13.36	5.26
2/28/2011	31.3	1.12	35.7	1.27	1.14	984.0	35.14	6800	14.23	5.26
3/31/2011	34.5	1.11	38.9	1.25	1.13	975.0	31.45	6806	12.87	5.27
4/30/2011	33.4	1.11	38.6	1.29	1.16	926.0	30.87	7000	12.46	5.27
5/31/2011	34.2	1.10	37.9	1.22	1.11	926.0	29.87	7000	12.44	5.28
6/30/2011	29.2	0.97	33.9	1.13	1.16	926.0	30.87	7000	14.24	5.28
7/31/2011	29.6	0.96	40.8	1.32	1.38	926.0	29.87	7000	12.78	5.29
8/31/2011	39.7	1.28	43.1	1.39	1.09	926.0	29.87	7000	10.82	5.29
9/30/2011	50.4	1.68	35.4	1.18	0.70	692.9	23.10	7000	7.77	5.30
10/31/2011	46.9	1.51	35.5	1.14	0.76	592.3	19.11	6987	6.92	5.30
11/30/2011	45.3	1.51	34.3	1.14	0.76	653.0	21.77	6613	7.89	5.30
12/31/2011	46.0	1.48	33.6	1.08	0.73	701.5	22.63	6994	8.49	5.30
Cumulative Oil Produced (E3m3)					77.46					
Cumulative Water Produced (E3m3)					30.26					
Cumulative Water Injected (E3m3)					598.75					
Cumulative Voidage Replacement Ratio					5.56					

Table 4
Daly Unit #3
Pattern: PAT 04-12

Date	Monthly Oil Prod M3	Oil Rate (CD) m3/d	Monthly Water Prod m3	Water Rate (CD) m3/d	Water Oil Ratio m3/m3	Monthly Water Inj m3	Water Inj Rate (CD) m3/d	Water Inj Pressure kPa	Voidage Replacement Ratio	Cum Voidage Replacement Ratio
1/31/2011	36.8	1.19	45.5	1.47	1.24			3200		1.22
2/28/2011	34.7	1.24	41.8	1.49	1.21			3200		1.22
3/31/2011	38.2	1.23	45.5	1.47	1.19			3200		1.22
4/30/2011	37.1	1.23	45.2	1.51	1.22			3200		1.22
5/31/2011	38.4	1.24	44.6	1.44	1.16			3200		1.22
6/30/2011	40.0	1.33	44.3	1.48	1.11			3200		1.22
7/31/2011	35.3	1.14	49.6	1.60	1.41			3200		1.22
8/31/2011	39.0	1.26	53.8	1.74	1.38			3200		1.22
9/30/2011	39.0	1.30	41.1	1.37	1.05			3367		1.22
10/31/2011	35.1	1.13	40.4	1.30	1.15	419.4	13.53	3441	5.39	1.22
11/30/2011	34.0	1.13	39.1	1.30	1.15	409.7	13.66	5671	5.44	1.22
12/31/2011	34.2	1.10	38.4	1.24	1.12	445.2	14.36	5800	5.94	1.22
Cumulative Oil Produced (E3m3)					114.59					
Cumulative Water Produced (E3m3)					41.24					
Cumulative Water Injected (E3m3)					200.35					
Cumulative Voidage Replacement Ratio					1.29					

Table 4
Daly Unit #3
Pattern: PAT 04-13

Date	Monthly Oil Prod M3	Oil Rate (CD) m3/d	Monthly Water Prod m3	Water Rate (CD) m3/d	Water Oil Ratio m3/m3	Monthly Water Inj m3	Water Inj Rate (CD) m3/d	Water Inj Pressure kPa	Voidage Replacement Ratio	Cum Voidage Replacement Ratio
1/31/2011	28.3	0.91	7.3	0.24	0.26	776.0	25.03	6200	20.68	5.29
2/28/2011	25.5	0.91	6.7	0.24	0.26	678.0	24.21	6200	20.00	5.29
3/31/2011	28.1	0.91	7.3	0.23	0.26	705.0	22.74	6206	18.90	5.30
4/30/2011	27.2	0.91	7.2	0.24	0.27	662.0	22.07	6400	18.23	5.31
5/31/2011	28.2	0.91	7.1	0.23	0.25	662.0	21.35	6400	17.81	5.31
6/30/2011	29.4	0.98	7.1	0.24	0.24	662.0	22.07	6400	17.19	5.32
7/31/2011	25.9	0.84	7.9	0.26	0.31	662.0	21.35	6400	18.60	5.32
8/31/2011	32.4	1.04	8.0	0.26	0.25	662.0	21.35	6400	15.52	5.33
9/30/2011	29.6	0.99	6.7	0.22	0.23	310.9	10.36	6393	8.12	5.33
10/31/2011	25.8	0.83	6.7	0.22	0.26	277.7	8.96	6200	8.09	5.33
11/30/2011	25.0	0.83	6.5	0.22	0.26	272.2	9.07	6200	8.19	5.33
12/31/2011	25.8	0.83	6.7	0.22	0.26	301.3	9.72	6197	8.78	5.34

Cumulative Oil Produced (E3m3)	50.93
Cumulative Water Produced (E3m3)	20.43
Cumulative Water Injected (E3m3)	399.25
Cumulative Voidage Replacement Ratio	5.60

Table 4
Daly Unit #3
Pattern: PAT 04-14

Date	Monthly Oil Prod M3	Oil Rate (CD) m3/d	Monthly Water Prod m3	Water Rate (CD) m3/d	Water Oil Ratio m3/m3	Monthly Water Inj m3	Water Inj Rate (CD) m3/d	Water Inj Pressure kPa	Voidage Replacement Ratio	Cum Voidage Replacement Ratio
1/31/2011	101.0	3.26	173.2	5.59	1.71	1536.0	49.55	6200	5.46	1.15
2/28/2011	97.5	3.48	156.0	5.57	1.60	1283.0	45.82	6200	4.93	1.15
3/31/2011	103.6	3.34	172.9	5.58	1.67	1169.0	37.71	6213	4.12	1.16
4/30/2011	96.3	3.21	169.8	5.66	1.76	1092.0	36.40	6600	4.00	1.16
5/31/2011	98.8	3.19	169.1	5.46	1.71	1092.0	35.23	6600	3.98	1.17
6/30/2011	80.1	2.67	161.0	5.37	2.01	1092.0	36.40	6607	4.43	1.17
7/31/2011	70.7	2.28	180.4	5.82	2.55	1092.0	35.23	6800	4.27	1.18
8/31/2011	43.2	1.39	147.8	4.77	3.43	1092.0	35.23	6800	5.63	1.18
9/30/2011	37.1	1.24	123.8	4.13	3.33	1149.3	38.31	6800	7.03	1.19
10/31/2011	24.7	0.80	23.8	0.77	0.96	1026.0	33.10	6703	20.47	1.19
11/30/2011	31.0	1.03	110.2	3.67	3.56	1181.3	39.38	3867	8.25	1.20
12/31/2011	31.7	1.02	110.5	3.56	3.48	1191.0	38.42	5800	8.25	1.20

Cumulative Oil Produced (E3m3)	83.59
Cumulative Water Produced (E3m3)	89.74
Cumulative Water Injected (E3m3)	215.26
Cumulative Voidage Replacement Ratio	1.24

Table 4
Daly Unit #3
Pattern: PAT 06-11

Date	Monthly Oil Prod M3	Oil Rate (CD) m3/d	Monthly Water Prod m3	Water Rate (CD) m3/d	Water Oil Ratio m3/m3	Monthly Water Inj m3	Water Inj Rate (CD) m3/d	Water Inj Pressure kPa	Voidage Replacement Ratio	Cum Voidage Replacement Ratio
1/31/2011	57.5	1.86	10.7	0.35	0.19			2750		2.19
2/28/2011	51.8	1.85	9.7	0.35	0.19			2750		2.19
3/31/2011	57.2	1.84	10.6	0.34	0.19			2750		2.18
4/30/2011	55.0	1.83	10.5	0.35	0.19	216.0	7.20	2862	3.12	2.18
5/31/2011	57.0	1.84	10.3	0.33	0.18	216.0	6.97	6100	3.03	2.18
6/30/2011	69.2	2.31	10.4	0.35	0.15	216.0	7.20	6100	2.56	2.19
7/31/2011	80.5	2.60	11.8	0.38	0.15	216.0	6.97	6100	2.21	2.19
8/31/2011	112.1	3.62	10.8	0.35	0.10	216.0	6.97	6100	1.65	2.18
9/30/2011	113.1	3.77	9.2	0.31	0.08	154.1	5.14	6097	1.19	2.18
10/31/2011	100.8	3.25	9.4	0.30	0.09	118.4	3.82	5987	1.01	2.18
11/30/2011	96.5	3.22	9.1	0.30	0.09	124.0	4.13	5610	1.11	2.18
12/31/2011	100.8	3.25	9.4	0.30	0.09	141.2	4.56	5890	1.21	2.18
Cumulative Oil Produced (E3m3)					55.23					
Cumulative Water Produced (E3m3)					23.91					
Cumulative Water Injected (E3m3)					180.35					
Cumulative Voidage Replacement Ratio					2.28					

Table 4
Daly Unit #3
Pattern: PAT 06-12

Date	Monthly Oil Prod M3	Oil Rate (CD) m3/d	Monthly Water Prod m3	Water Rate (CD) m3/d	Water Oil Ratio m3/m3	Monthly Water Inj m3	Water Inj Rate (CD) m3/d	Water Inj Pressure kPa	Voidage Replacement Ratio	Cum Voidage Replacement Ratio
1/31/2011	52.3	1.69	45.2	1.46	0.86			5200		1.27
2/28/2011	47.1	1.68	41.1	1.47	0.87			5200		1.27
3/31/2011	52.0	1.68	44.6	1.44	0.86			5200		1.27
4/30/2011	50.3	1.67	44.4	1.48	0.88	252.0	8.40	5230	2.57	1.27
5/31/2011	51.7	1.67	43.5	1.40	0.84	252.0	8.13	6100	2.55	1.27
6/30/2011	47.7	1.59	39.5	1.32	0.83	252.0	8.40	6123	2.79	1.27
7/31/2011	45.8	1.48	47.0	1.52	1.03	252.0	8.13	6800	2.63	1.28
8/31/2011	65.3	2.11	54.9	1.77	0.84	252.0	8.13	6800	2.02	1.28
9/30/2011	58.7	1.96	40.2	1.34	0.68	197.2	6.57	5647	1.92	1.28
10/31/2011	51.8	1.67	38.7	1.25	0.75	176.5	5.69	5563	1.88	1.28
11/30/2011	42.2	1.41	36.9	1.23	0.87	174.0	5.80	5954	2.12	1.28
12/31/2011	42.8	1.38	36.3	1.17	0.85	183.2	5.91	6050	2.24	1.28
Cumulative Oil Produced (E3m3)					93.59					
Cumulative Water Produced (E3m3)					32.72					
Cumulative Water Injected (E3m3)					169.44					
Cumulative Voidage Replacement Ratio					1.34					

Table 4
Daly Unit #3
Pattern: PAT 06-14

Date	Monthly Oil Prod M3	Oil Rate (CD) m3/d	Monthly Water Prod m3	Water Rate (CD) m3/d	Water Oil Ratio m3/m3	Monthly Water Inj m3	Water Inj Rate (CD) m3/d	Water Inj Pressure kPa	Voidage Replacement Ratio	Cum Voidage Replacement Ratio
1/31/2011	42.0	1.35	11.1	0.36	0.27					0.20
2/28/2011	37.8	1.35	10.0	0.36	0.26					0.20
3/31/2011	41.7	1.34	11.0	0.36	0.26					0.20
4/30/2011	39.5	1.32	10.6	0.35	0.27					0.20
5/31/2011	41.2	1.33	10.5	0.34	0.26					0.20
6/30/2011	43.6	1.45	10.7	0.36	0.25					0.20
7/31/2011	38.4	1.24	11.9	0.38	0.31					0.20
8/31/2011	45.7	1.47	11.8	0.38	0.26					0.20
9/30/2011	43.1	1.44	10.7	0.36	0.25					0.20
10/31/2011	38.1	1.23	10.9	0.35	0.29					0.20
11/30/2011	36.8	1.23	10.6	0.35	0.29					0.20
12/31/2011	38.1	1.23	10.9	0.35	0.29					0.20
Cumulative Oil Produced (E3m3)					51.70					
Cumulative Water Produced (E3m3)					20.55					
Cumulative Water Injected (E3m3)					15.37					
Cumulative Voidage Replacement Ratio					0.21					

Table 4
Daly Unit #3
Pattern: PAT 07-13

Date	Monthly Oil Prod M3	Oil Rate (CD) m3/d	Monthly Water Prod m3	Water Rate (CD) m3/d	Water Oil Ratio m3/m3	Monthly Water Inj m3	Water Inj Rate (CD) m3/d	Water Inj Pressure kPa	Voidage Replacement Ratio	Cum Voidage Replacement Ratio
1/31/2011	43.6	1.41	18.1	0.58	0.42	462.0	14.90	6000	7.15	1.32
2/28/2011	39.2	1.40	16.4	0.59	0.42	445.0	15.89	6000	7.64	1.32
3/31/2011	43.3	1.40	17.8	0.57	0.41	330.0	10.65	6006	5.15	1.32
4/30/2011	41.1	1.37	17.5	0.58	0.43	290.0	9.67	6200	4.72	1.33
5/31/2011	42.9	1.38	17.3	0.56	0.40	290.0	9.35	6200	4.59	1.33
6/30/2011	45.3	1.51	17.4	0.58	0.38	290.0	9.67	6200	4.41	1.33
7/31/2011	39.9	1.29	19.5	0.63	0.49	290.0	9.35	6200	4.67	1.33
8/31/2011	49.9	1.61	19.7	0.64	0.40	290.0	9.35	6200	3.97	1.33
9/30/2011	53.9	1.79	16.7	0.56	0.31	350.3	11.68	6200	4.72	1.33
10/31/2011	48.7	1.57	16.8	0.54	0.35	270.0	8.71	6190	3.92	1.33
11/30/2011	46.4	1.55	15.8	0.53	0.34	276.2	9.21	5903	4.22	1.33
12/31/2011	48.7	1.57	16.8	0.54	0.35	291.5	9.40	6000	4.23	1.34
Cumulative Oil Produced (E3m3)					91.38					
Cumulative Water Produced (E3m3)					57.33					
Cumulative Water Injected (E3m3)					206.89					
Cumulative Voidage Replacement Ratio					1.39					

Table 4
Daly Unit #3
Pattern: PAT 08-11

Date	Monthly Oil Prod M3	Oil Rate (CD) m3/d	Monthly Water Prod m3	Water Rate (CD) m3/d	Water Oil Ratio m3/m3	Monthly Water Inj m3	Water Inj Rate (CD) m3/d	Water Inj Pressure kPa	Voidage Replacement Ratio	Cum Voidage Replacement Ratio
1/31/2011	39.2	1.26	12.3	0.40	0.31			4900		1.67
2/28/2011	34.9	1.25	11.4	0.41	0.33			4900		1.67
3/31/2011	39.3	1.27	12.4	0.40	0.32			4900		1.67
4/30/2011	38.0	1.27	12.3	0.41	0.32			4900		1.67
5/31/2011	39.4	1.27	12.2	0.39	0.31			4900		1.67
6/30/2011	41.1	1.37	12.1	0.40	0.29			4900		1.67
7/31/2011	36.2	1.17	13.5	0.44	0.37			4900		1.66
8/31/2011	30.1	0.97	16.6	0.53	0.55			4900		1.66
9/30/2011	23.9	0.80	15.5	0.52	0.65			3650		1.66
10/31/2011	21.5	0.69	15.7	0.51	0.73	370.8	11.96	3739	9.61	1.67
11/30/2011	20.8	0.69	15.2	0.51	0.73	376.2	12.54	6384	10.07	1.67
12/31/2011	21.5	0.69	15.7	0.51	0.73	412.2	13.30	5900	10.68	1.67
Cumulative Oil Produced (E3m3)					78.03					
Cumulative Water Produced (E3m3)					19.40					
Cumulative Water Injected (E3m3)					171.82					
Cumulative Voidage Replacement Ratio					1.76					

Table 4
Daly Unit #3
Pattern: PAT 08-12

Date	Monthly Oil Prod M3	Oil Rate (CD) m3/d	Monthly Water Prod m3	Water Rate (CD) m3/d	Water Oil Ratio m3/m3	Monthly Water Inj m3	Water Inj Rate (CD) m3/d	Water Inj Pressure kPa	Voidage Replacement Ratio	Cum Voidage Replacement Ratio
1/31/2011	26.3	0.85	17.1	0.55	0.65					3.29
2/28/2011	23.6	0.84	14.4	0.51	0.61					3.29
3/31/2011	26.1	0.84	18.1	0.58	0.69					3.28
4/30/2011	25.2	0.84	15.8	0.53	0.63					3.28
5/31/2011	25.8	0.83	17.9	0.58	0.69					3.28
6/30/2011	19.8	0.66	13.3	0.44	0.67					3.28
7/31/2011	22.0	0.71	16.1	0.52	0.73					3.27
8/31/2011	29.7	0.96	17.0	0.55	0.57					3.27
9/30/2011	34.2	1.14	13.5	0.45	0.39					3.27
10/31/2011	33.6	1.08	15.3	0.49	0.46					3.27
11/30/2011	26.8	0.89	9.0	0.30	0.33					3.26
12/31/2011	27.7	0.89	9.3	0.30	0.33					3.26
Cumulative Oil Produced (E3m3)					45.31					
Cumulative Water Produced (E3m3)					15.80					
Cumulative Water Injected (E3m3)					209.39					
Cumulative Voidage Replacement Ratio					3.43					

Table 4
Daly Unit #3
Pattern: PAT 12-01

Date	Monthly Oil Prod M3	Oil Rate (CD) m3/d	Monthly Water Prod m3	Water Rate (CD) m3/d	Water Oil Ratio m3/m3	Monthly Water Inj m3	Water Inj Rate (CD) m3/d	Water Inj Pressure kPa	Voidage Replacement Ratio	Cum Voidage Replacement Ratio
1/31/2011	31.9	1.03	1.8	0.06	0.06	358.0	11.55	6400	9.99	1.49
2/28/2011	30.0	1.07	2.2	0.08	0.07	339.0	12.11	6400	9.92	1.49
3/31/2011	33.0	1.06	2.1	0.07	0.06	383.0	12.35	6413	10.24	1.49
4/30/2011	32.0	1.07	2.1	0.07	0.07	337.0	11.23	6800	9.28	1.49
5/31/2011	33.3	1.07	2.2	0.07	0.06	337.0	10.87	6800	8.94	1.50
6/30/2011	34.6	1.15	2.1	0.07	0.06	337.0	11.23	6800	8.63	1.50
7/31/2011	30.5	0.98	2.4	0.08	0.08	337.0	10.87	6800	9.65	1.50
8/31/2011	38.8	1.25	2.0	0.06	0.05	337.0	10.87	6800	7.75	1.50
9/30/2011	37.2	1.24	1.7	0.06	0.04	352.3	11.74	6800	8.50	1.51
10/31/2011	32.6	1.05	1.8	0.06	0.05	246.4	7.95	6800	6.74	1.51
11/30/2011	31.5	1.05	1.7	0.06	0.05	235.7	7.86	6800	6.66	1.51
12/31/2011	32.6	1.05	1.8	0.06	0.05	210.4	6.79	6800	5.75	1.51

Cumulative Oil Produced (E3m3)	90.25
Cumulative Water Produced (E3m3)	12.58
Cumulative Water Injected (E3m3)	164.76
Cumulative Voidage Replacement Ratio	1.60

Table 4
Daly Unit #3
Pattern: PAT 13-02

Date	Monthly Oil Prod M3	Oil Rate (CD) m3/d	Monthly Water Prod m3	Water Rate (CD) m3/d	Water Oil Ratio m3/m3	Monthly Water Inj m3	Water Inj Rate (CD) m3/d	Water Inj Pressure kPa	Voidage Replacement Ratio	Cum Voidage Replacement Ratio
1/31/2011	89.3	2.88	181.0	5.84	2.03	283.0	9.13	5500	1.02	0.48
2/28/2011	83.7	2.99	159.2	5.68	1.90	166.0	5.93	5500	0.67	0.48
3/31/2011	90.5	2.92	160.3	5.17	1.77	117.0	3.77	5516	0.46	0.48
4/30/2011	89.4	2.98	154.9	5.16	1.73	96.0	3.20	6000	0.38	0.48
5/31/2011	89.1	2.88	116.9	3.77	1.31	96.0	3.10	6000	0.45	0.48
6/30/2011	104.3	3.48	132.5	4.42	1.27	96.0	3.20	6007	0.39	0.48
7/31/2011	111.0	3.58	120.5	3.89	1.09	96.0	3.10	6200	0.40	0.48
8/31/2011	135.9	4.38	133.5	4.31	0.98	96.0	3.10	6200	0.34	0.48
9/30/2011	118.1	3.94	16.6	0.55	0.14	370.4	12.35	6193	2.59	0.48
10/31/2011	105.8	3.41	16.3	0.52	0.15	0.0	0.00	6006	0.00	0.48
11/30/2011	101.5	3.38	15.9	0.53	0.16	297.5	9.92	6187	2.39	0.48
12/31/2011	106.0	3.42	16.4	0.53	0.16	375.5	12.11	5794	2.89	0.48
Cumulative Oil Produced (E3m3)					133.29					
Cumulative Water Produced (E3m3)					193.69					
Cumulative Water Injected (E3m3)					160.79					
Cumulative Voidage Replacement Ratio					0.49					

Table 4
Daly Unit #3
Pattern: PAT 14-01

Date	Monthly Oil Prod M3	Oil Rate (CD) m3/d	Monthly Water Prod m3	Water Rate (CD) m3/d	Water Oil Ratio m3/m3	Monthly Water Inj m3	Water Inj Rate (CD) m3/d	Water Inj Pressure kPa	Voidage Replacement Ratio	Cum Voidage Replacement Ratio
1/31/2011	30.8	0.99	41.0	1.32	1.33					1.86
2/28/2011	29.0	1.04	37.5	1.34	1.29					1.86
3/31/2011	32.0	1.03	40.9	1.32	1.28					1.86
4/30/2011	31.0	1.03	40.6	1.35	1.31					1.86
5/31/2011	32.1	1.04	40.1	1.29	1.25					1.86
6/30/2011	33.5	1.12	39.8	1.33	1.19					1.86
7/31/2011	29.5	0.95	44.6	1.44	1.51					1.85
8/31/2011	37.5	1.21	44.9	1.45	1.20					1.85
9/30/2011	45.6	1.52	33.7	1.12	0.74					1.85
10/31/2011	42.1	1.36	33.2	1.07	0.79					1.85
11/30/2011	40.7	1.36	32.2	1.07	0.79					1.85
12/31/2011	41.2	1.33	31.3	1.01	0.76					1.85
Cumulative Oil Produced (E3m3)					70.54					
Cumulative Water Produced (E3m3)					28.65					
Cumulative Water Injected (E3m3)					192.02					
Cumulative Voidage Replacement Ratio					1.94					

Table 4
Daly Unit #3
Pattern: PAT 14-11

Date	Monthly Oil Prod M3	Oil Rate (CD) m3/d	Monthly Water Prod m3	Water Rate (CD) m3/d	Water Oil Ratio m3/m3	Monthly Water Inj m3	Water Inj Rate (CD) m3/d	Water Inj Pressure kPa	Voidage Replacement Ratio	Cum Voidage Replacement Ratio
1/31/2011	96.4	3.11	185.1	5.97	1.92	1134.0	36.58	5600	3.94	2.41
2/28/2011	86.8	3.10	167.6	5.99	1.93	1077.0	38.46	5600	4.14	2.42
3/31/2011	95.8	3.09	182.7	5.89	1.91	1086.0	35.03	5606	3.81	2.42
4/30/2011	91.9	3.06	181.2	6.04	1.97	1016.0	33.87	5800	3.64	2.42
5/31/2011	95.4	3.08	178.8	5.77	1.88	1016.0	32.77	5800	3.62	2.43
6/30/2011	100.2	3.34	177.8	5.93	1.78	1016.0	33.87	5807	3.57	2.43
7/31/2011	88.9	2.87	199.5	6.43	2.25	1016.0	32.77	6000	3.45	2.43
8/31/2011	66.2	2.14	162.9	5.26	2.46	1016.0	32.77	6000	4.35	2.44
9/30/2011	59.1	1.97	135.6	4.52	2.29	1073.0	35.77	5980	5.40	2.44
10/31/2011	43.7	1.41	32.7	1.05	0.75	790.0	25.48	5397	9.96	2.45
11/30/2011	49.6	1.65	121.5	4.05	2.45	820.5	27.35	5297	4.70	2.45
12/31/2011	50.9	1.64	122.0	3.94	2.40	818.1	26.39	5200	4.64	2.46
Cumulative Oil Produced (E3m3)					71.76					
Cumulative Water Produced (E3m3)					25.51					
Cumulative Water Injected (E3m3)					250.97					
Cumulative Voidage Replacement Ratio					2.58					

Table 4
Daly Unit #3
Pattern: PAT 14-12

Date	Monthly Oil Prod M3	Oil Rate (CD) m3/d	Monthly Water Prod m3	Water Rate (CD) m3/d	Water Oil Ratio m3/m3	Monthly Water Inj m3	Water Inj Rate (CD) m3/d	Water Inj Pressure kPa	Voidage Replacement Ratio	Cum Voidage Replacement Ratio
1/31/2011	97.5	3.14	194.3	6.27	1.99	462.0	14.90	6000	1.55	3.50
2/28/2011	88.6	3.16	180.4	6.44	2.04	445.0	15.89	6000	1.62	3.50
3/31/2011	97.8	3.15	196.7	6.34	2.01	419.0	13.52	6013	1.39	3.49
4/30/2011	90.6	3.02	173.0	5.77	1.91	288.0	9.60	6380	1.07	3.49
5/31/2011	97.9	3.16	192.8	6.22	1.97	288.0	9.29	5800	0.97	3.49
6/30/2011	102.2	3.41	191.5	6.38	1.87	288.0	9.60	5827	0.96	3.48
7/31/2011	91.3	2.94	221.9	7.16	2.43	321.5	10.37	6600	1.01	3.48
8/31/2011	117.7	3.80	219.5	7.08	1.87	311.5	10.05	6600	0.90	3.47
9/30/2011	86.4	2.88	185.0	6.17	2.14	63.1	2.10	6600	0.23	3.47
10/31/2011	71.3	2.30	186.8	6.02	2.62	42.7	1.38	6587	0.16	3.46
11/30/2011	67.5	2.25	176.5	5.88	2.61	45.5	1.52	6207	0.18	3.46
12/31/2011	68.3	2.20	186.3	6.01	2.73	56.4	1.82	6394	0.22	3.45

Cumulative Oil Produced (E3m3)	91.52
Cumulative Water Produced (E3m3)	82.03
Cumulative Water Injected (E3m3)	619.97
Cumulative Voidage Replacement Ratio	3.57

Table 4
Daly Unit #3
Pattern: PAT 16-01

Date	Monthly Oil Prod M3	Oil Rate (CD) m3/d	Monthly Water Prod m3	Water Rate (CD) m3/d	Water Oil Ratio m3/m3	Monthly Water Inj m3	Water Inj Rate (CD) m3/d	Water Inj Pressure kPa	Voidage Replacement Ratio	Cum Voidage Replacement Ratio
1/31/2011	33.2	1.07	21.7	0.70	0.66					3.92
2/28/2011	29.9	1.07	19.6	0.70	0.66					3.92
3/31/2011	33.0	1.07	21.4	0.69	0.65					3.91
4/30/2011	31.8	1.06	21.4	0.71	0.67					3.91
5/31/2011	33.1	1.07	21.0	0.68	0.64					3.91
6/30/2011	33.4	1.11	20.4	0.68	0.61					3.90
7/31/2011	30.3	0.98	23.4	0.75	0.77					3.90
8/31/2011	37.9	1.22	23.8	0.77	0.63					3.90
9/30/2011	45.3	1.51	17.6	0.59	0.39					3.89
10/31/2011	41.7	1.34	17.1	0.55	0.41					3.89
11/30/2011	40.3	1.34	16.6	0.55	0.41					3.89
12/31/2011	41.7	1.34	17.1	0.55	0.41					3.88

Cumulative Oil Produced (E3m3)	50.09
Cumulative Water Produced (E3m3)	18.11
Cumulative Water Injected (E3m3)	277.99
Cumulative Voidage Replacement Ratio	4.08

Table 4
Daly Unit #3
Pattern: PAT 16-02

Date	Monthly Oil Prod M3	Oil Rate (CD) m3/d	Monthly Water Prod m3	Water Rate (CD) m3/d	Water Oil Ratio m3/m3	Monthly Water Inj m3	Water Inj Rate (CD) m3/d	Water Inj Pressure kPa	Voidage Replacement Ratio	Cum Voidage Replacement Ratio
1/31/2011	57.5	1.85	12.6	0.41	0.22	127.0	4.10	6800	1.72	1.04
2/28/2011	53.4	1.91	12.0	0.43	0.22	126.5	4.52	6800	1.83	1.04
3/31/2011	58.9	1.90	12.9	0.42	0.22	134.0	4.32	6800	1.77	1.04
4/30/2011	57.0	1.90	12.9	0.43	0.23	101.5	3.38	6800	1.38	1.04
5/31/2011	59.1	1.90	12.8	0.41	0.22	101.5	3.27	6800	1.34	1.04
6/30/2011	61.6	2.05	12.6	0.42	0.20	101.5	3.38	6800	1.29	1.04
7/31/2011	54.3	1.75	14.1	0.46	0.26	101.5	3.27	6800	1.41	1.04
8/31/2011	59.8	1.93	17.5	0.57	0.29	101.5	3.27	6800	1.25	1.04
9/30/2011	60.8	2.03	14.6	0.48	0.24			6800	0.00	1.04
10/31/2011	54.9	1.77	14.5	0.47	0.26	13.7	0.44	6755	0.19	1.04
11/30/2011	53.1	1.77	14.0	0.47	0.26	18.7	0.62	5400	0.27	1.04
12/31/2011	50.3	1.62	13.9	0.45	0.28	114.8	3.70	5387	1.70	1.04
Cumulative Oil Produced (E3m3)					88.45					
Cumulative Water Produced (E3m3)					17.24					
Cumulative Water Injected (E3m3)					116.38					
Cumulative Voidage Replacement Ratio					1.10					

Table 4
Daly Unit #3
Pattern: PAT 10-11

Date	Monthly Oil Prod M3	Oil Rate (CD) m3/d	Monthly Water Prod m3	Water Rate (CD) m3/d	Water Oil Ratio m3/m3	Monthly Water Inj m3	Water Inj Rate (CD) m3/d	Water Inj Pressure kPa	Voidage Replacement Ratio	Cum Voidage Replacement Ratio
1/31/2011	43.6	1.41	14.7	0.47	0.34			2700		7.45
2/28/2011	38.6	1.38	13.3	0.48	0.34			2700		7.45
3/31/2011	43.3	1.40	14.5	0.47	0.34	486.0	15.68	2813	8.00	7.45
4/30/2011	42.0	1.40	14.4	0.48	0.34	436.0	14.53	6200	7.36	7.45
5/31/2011	43.4	1.40	14.2	0.46	0.33	436.0	14.06	6200	7.20	7.45
6/30/2011	45.3	1.51	14.1	0.47	0.31	436.0	14.53	6213	6.97	7.44
7/31/2011	40.4	1.30	16.1	0.52	0.40	436.0	14.06	6600	7.35	7.44
8/31/2011	42.7	1.38	12.2	0.39	0.29	436.0	14.06	6600	7.55	7.44
9/30/2011	37.7	1.26	9.1	0.30	0.24	116.4	3.88	6593	2.36	7.44
10/31/2011	33.4	1.08	9.2	0.30	0.28	96.9	3.13	6381	2.16	7.44
11/30/2011	32.3	1.08	8.9	0.30	0.28	104.9	3.50	5813	2.41	7.44
12/31/2011	33.4	1.08	9.2	0.30	0.28	103.5	3.34	6194	2.30	7.43
Cumulative Oil Produced (E3m3)					54.43					
Cumulative Water Produced (E3m3)					13.68					
Cumulative Water Injected (E3m3)					533.53					
Cumulative Voidage Replacement Ratio					7.83					

Table 4
Daly Unit #3
Pattern: PAT 10-12

Date	Monthly Oil Prod M3	Oil Rate (CD) m3/d	Monthly Water Prod m3	Water Rate (CD) m3/d	Water Oil Ratio m3/m3	Monthly Water Inj m3	Water Inj Rate (CD) m3/d	Water Inj Pressure kPa	Voidage Replacement Ratio	Cum Voidage Replacement Ratio
1/31/2011	113.7	3.67	190.9	6.16	1.68	351.0	11.32	6000	1.12	2.40
2/28/2011	103.3	3.69	176.2	6.29	1.71	339.0	12.11	6000	1.18	2.40
3/31/2011	114.0	3.68	194.5	6.28	1.71	272.0	8.77	6026	0.86	2.40
4/30/2011	106.1	3.54	168.6	5.62	1.59	236.0	7.87	6800	0.84	2.39
5/31/2011	113.7	3.67	190.8	6.15	1.68	236.0	7.61	6800	0.76	2.39
6/30/2011	112.2	3.74	185.4	6.18	1.65	236.0	7.87	6800	0.77	2.39
7/31/2011	104.9	3.38	215.8	6.96	2.06	236.0	7.61	6800	0.72	2.38
8/31/2011	136.0	4.39	213.9	6.90	1.57	236.0	7.61	6800	0.66	2.38
9/30/2011	102.0	3.40	183.7	6.12	1.80	271.7	9.06	6800	0.93	2.38
10/31/2011	87.3	2.82	187.8	6.06	2.15	277.2	8.94	6784	0.99	2.38
11/30/2011	78.1	2.60	172.2	5.74	2.20	382.0	12.73	6303	1.49	2.38
12/31/2011	78.4	2.53	181.4	5.85	2.31	420.2	13.55	6400	1.58	2.37
Cumulative Oil Produced (E3m3)					93.87					
Cumulative Water Produced (E3m3)					75.93					
Cumulative Water Injected (E3m3)					417.56					
Cumulative Voidage Replacement Ratio					2.46					

Table 4
Daly Unit #3
Pattern: PAT 11-13

Date	Monthly Oil Prod M3	Oil Rate (CD) m3/d	Monthly Water Prod m3	Water Rate (CD) m3/d	Water Oil Ratio m3/m3	Monthly Water Inj m3	Water Inj Rate (CD) m3/d	Water Inj Pressure kPa	Voidage Replacement Ratio	Cum Voidage Replacement Ratio
1/31/2011	103.8	3.35	128.3	4.14	1.24	410.0	13.23	6000	1.71	0.80
2/28/2011	93.9	3.35	117.1	4.18	1.25	392.0	14.00	6000	1.80	0.80
3/31/2011	103.5	3.34	127.5	4.11	1.23	343.0	11.06	6003	1.44	0.80
4/30/2011	98.9	3.30	125.7	4.19	1.27	301.0	10.03	6083	1.30	0.80
5/31/2011	102.8	3.31	124.3	4.01	1.21	301.0	9.71	5600	1.29	0.80
6/30/2011	108.4	3.61	124.0	4.13	1.14	301.0	10.03	5620	1.26	0.80
7/31/2011	95.4	3.08	139.2	4.49	1.46	301.0	9.71	6200	1.25	0.80
8/31/2011	119.0	3.84	141.3	4.56	1.19	301.0	9.71	6200	1.12	0.80
9/30/2011	116.4	3.88	123.3	4.11	1.06	586.8	19.56	6193	2.37	0.80
10/31/2011	103.7	3.34	125.1	4.03	1.21	402.9	13.00	5994	1.71	0.80
11/30/2011	100.3	3.34	121.1	4.03	1.21	436.5	14.55	5807	1.91	0.80
12/31/2011	100.2	3.23	121.5	3.92	1.21	460.7	14.86	5987	2.02	0.80
Cumulative Oil Produced (E3m3)					191.33					
Cumulative Water Produced (E3m3)					160.88					
Cumulative Water Injected (E3m3)					293.56					
Cumulative Voidage Replacement Ratio					0.83					

Table 4
Daly Unit #3
Pattern: PAT 12-11

Date	Monthly Oil Prod M3	Oil Rate (CD) m3/d	Monthly Water Prod m3	Water Rate (CD) m3/d	Water Oil Ratio m3/m3	Monthly Water Inj m3	Water Inj Rate (CD) m3/d	Water Inj Pressure kPa	Voidage Replacement Ratio	Cum Voidage Replacement Ratio
1/31/2011	103.4	3.34	191.5	6.18	1.85			2500		2.74
2/28/2011	93.6	3.34	173.8	6.21	1.86			2500		2.73
3/31/2011	103.3	3.33	189.6	6.12	1.84			2500		2.73
4/30/2011	99.0	3.30	187.5	6.25	1.89			2500		2.72
5/31/2011	102.8	3.32	185.1	5.97	1.80			2500		2.71
6/30/2011	108.1	3.60	184.6	6.15	1.71			2500		2.71
7/31/2011	95.3	3.07	206.7	6.67	2.17	228.0	7.35	2500	0.74	2.70
8/31/2011	61.3	1.98	153.3	4.95	2.50	299.0	9.65	2500	1.37	2.70
9/30/2011	58.2	1.94	128.3	4.28	2.21	242.7	8.09	2643	1.27	2.70
10/31/2011	43.8	1.41	28.9	0.93	0.66	190.7	6.15	6787	2.52	2.70
11/30/2011	49.5	1.65	115.2	3.84	2.33	279.4	9.31	6413	1.66	2.70
12/31/2011	50.9	1.64	115.6	3.73	2.27	205.8	6.64	6784	1.21	2.70
Cumulative Oil Produced (E3m3)					78.73					
Cumulative Water Produced (E3m3)					56.03					
Cumulative Water Injected (E3m3)					377.86					
Cumulative Voidage Replacement Ratio					2.80					

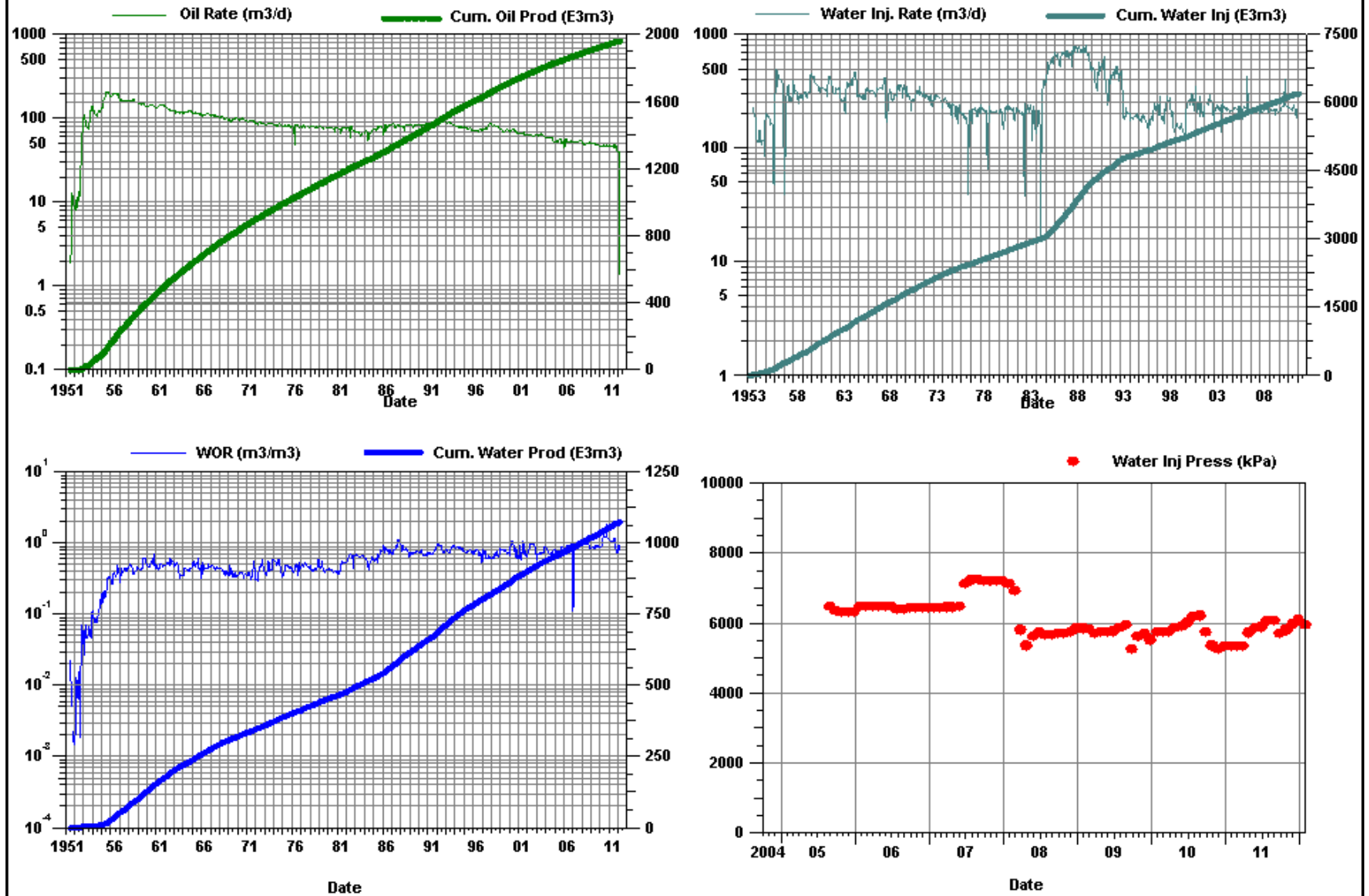
Table 4
Daly Unit #3
Pattern: PAT 12-12

Date	Monthly Oil Prod M3	Oil Rate (CD) m3/d	Monthly Water Prod m3	Water Rate (CD) m3/d	Water Oil Ratio m3/m3	Monthly Water Inj m3	Water Inj Rate (CD) m3/d	Water Inj Pressure kPa	Voidage Replacement Ratio	Cum Voidage Replacement Ratio
1/31/2011	89.0	2.87	12.4	0.40	0.14			6400		1.37
2/28/2011	79.3	2.83	11.3	0.40	0.14			6400		1.37
3/31/2011	88.5	2.85	12.3	0.40	0.14			6400		1.37
4/30/2011	85.5	2.85	12.2	0.41	0.14			6400		1.37
5/31/2011	88.6	2.86	12.0	0.39	0.14			6400		1.37
6/30/2011	92.5	3.08	11.9	0.40	0.13			6400		1.37
7/31/2011	81.7	2.63	13.4	0.43	0.16	480.5	15.50	6400	4.77	1.37
8/31/2011	96.0	3.10	18.3	0.59	0.19	416.5	13.44	6400	3.44	1.37
9/30/2011	73.5	2.45	14.6	0.49	0.20	284.2	9.47	6502	3.05	1.37
10/31/2011	66.3	2.14	13.9	0.45	0.21	255.5	8.24	6539	3.01	1.37
11/30/2011	24.5	0.82	11.2	0.37	0.46	295.6	9.85	6204	7.90	1.38
12/31/2011	25.3	0.82	11.6	0.37	0.46	308.7	9.96	6297	7.99	1.38
Cumulative Oil Produced (E3m3)					96.29					
Cumulative Water Produced (E3m3)					13.54					
Cumulative Water Injected (E3m3)					160.34					
Cumulative Voidage Replacement Ratio					1.46					

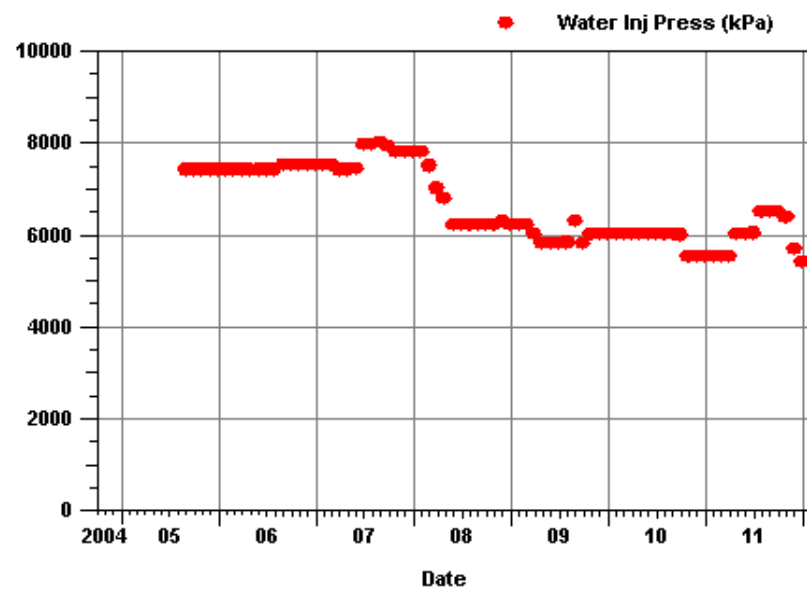
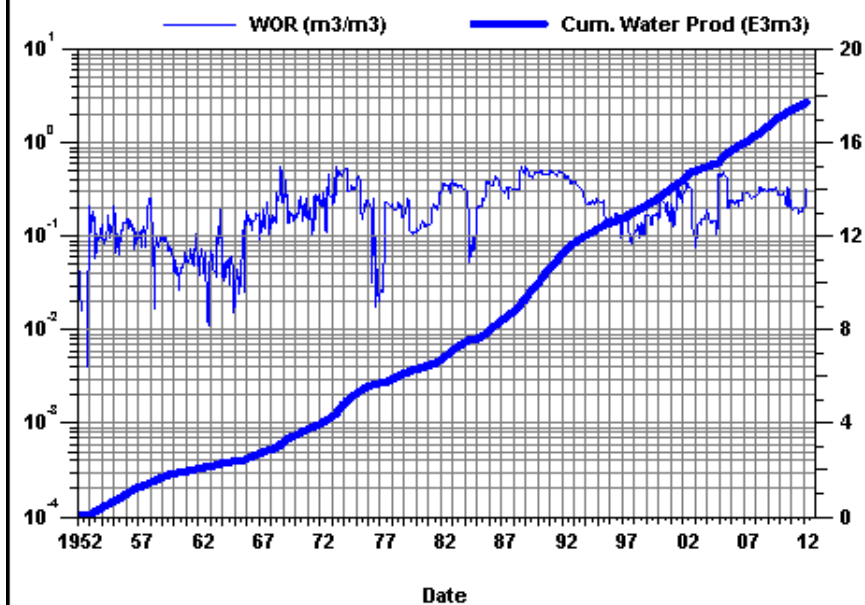
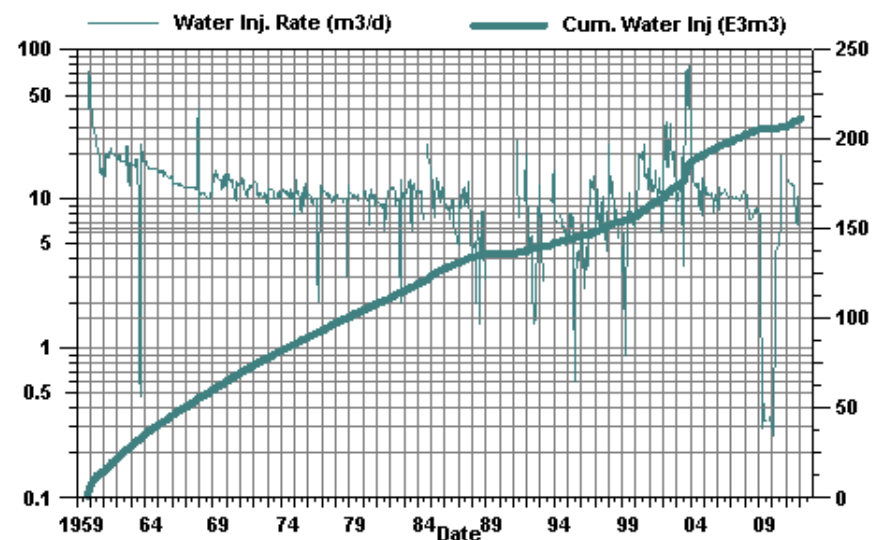
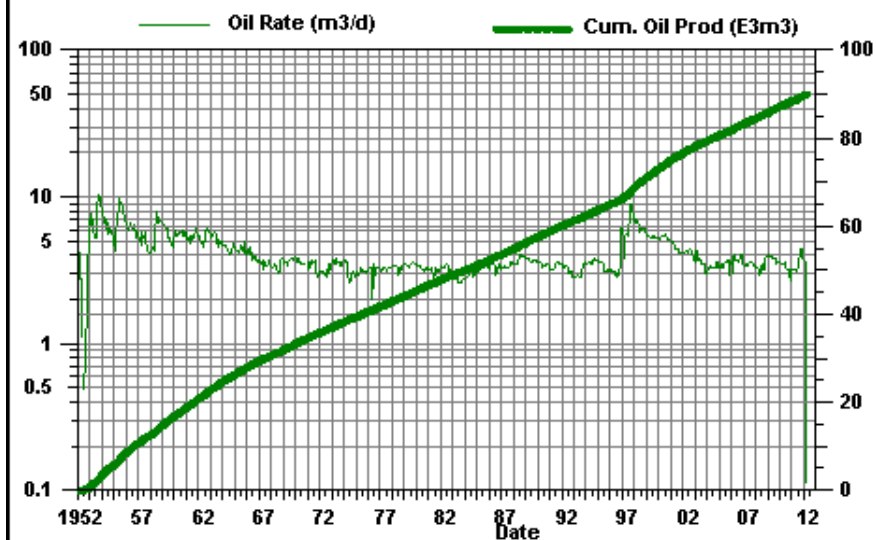
Table 4
Daly Unit #3
Pattern: PAT 10-01

Date	Monthly Oil Prod M3	Oil Rate (CD) m3/d	Monthly Water Prod m3	Water Rate (CD) m3/d	Water Oil Ratio m3/m3	Monthly Water Inj m3	Water Inj Rate (CD) m3/d	Water Inj Pressure kPa	Voidage Replacement Ratio	Cum Voidage Replacement Ratio
1/31/2011	7.08	0.23	5.53	0.18	0.78					2.543
2/28/2011	6.38	0.23	4.97	0.18	0.78					2.542
3/31/2011	7.05	0.23	5.47	0.18	0.78					2.541
4/30/2011	6.8	0.23	5.42	0.18	0.8					2.54
5/31/2011	7.05	0.23	5.35	0.17	0.76					2.539
6/30/2011	7.35	0.25	5.33	0.18	0.72					2.537
7/31/2011	6.5	0.21	5.95	0.19	0.92					2.536
8/31/2011	8.1	0.26	6.05	0.2	0.75					2.535
9/30/2011	14.05	0.47	7.17	0.24	0.51					2.533
10/31/2011	13.59	0.44	7.64	0.25	0.56					2.531
11/30/2011	13.15	0.44	7.4	0.25	0.56					2.529
12/31/2011	13.59	0.44	7.64	0.25	0.56					2.527
Cumulative Oil Produced (E3m3)					21.62					
Cumulative Water Produced (E3m3)					4.90					
Cumulative Water Injected (E3m3)					70.71					
Cumulative Voidage Replacement Ratio					2.67					

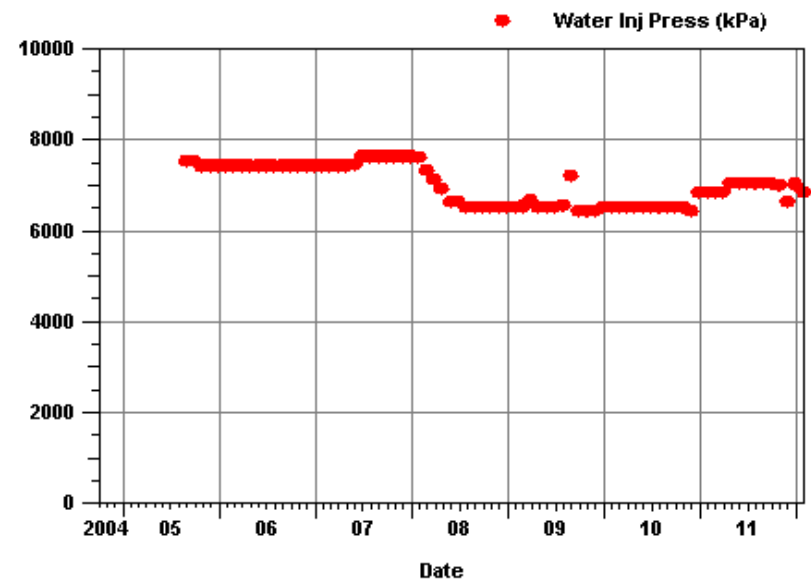
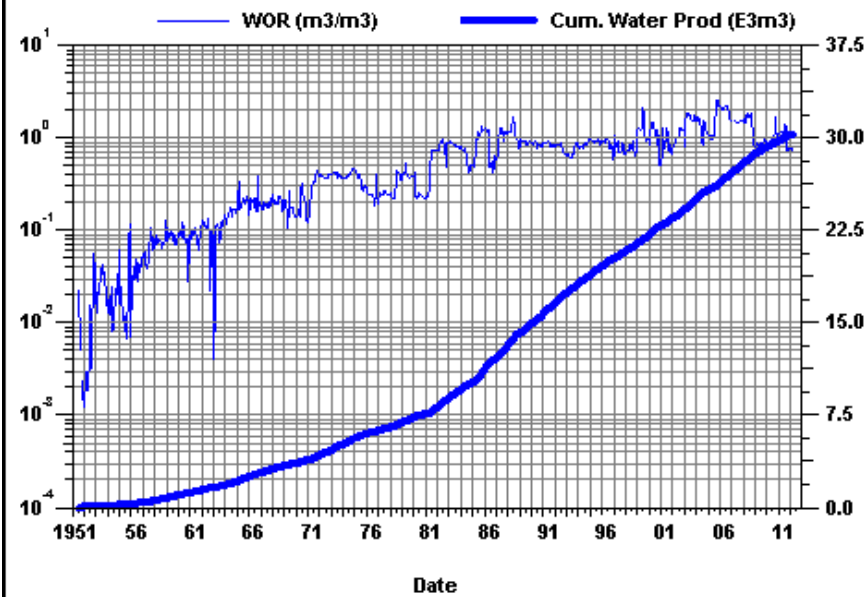
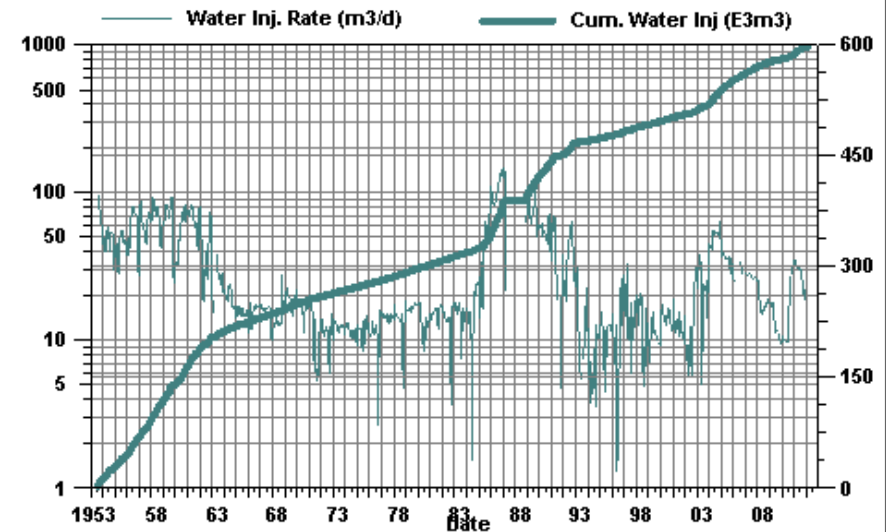
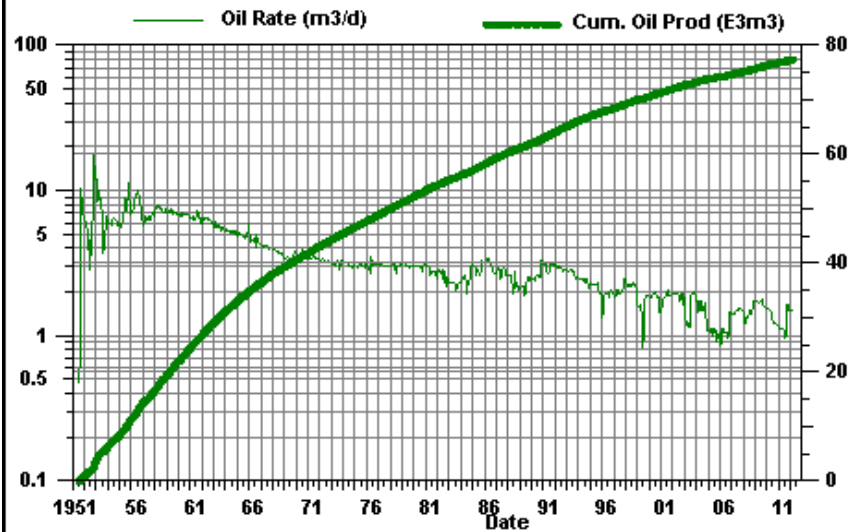
Daly Unit #3 Total For Project



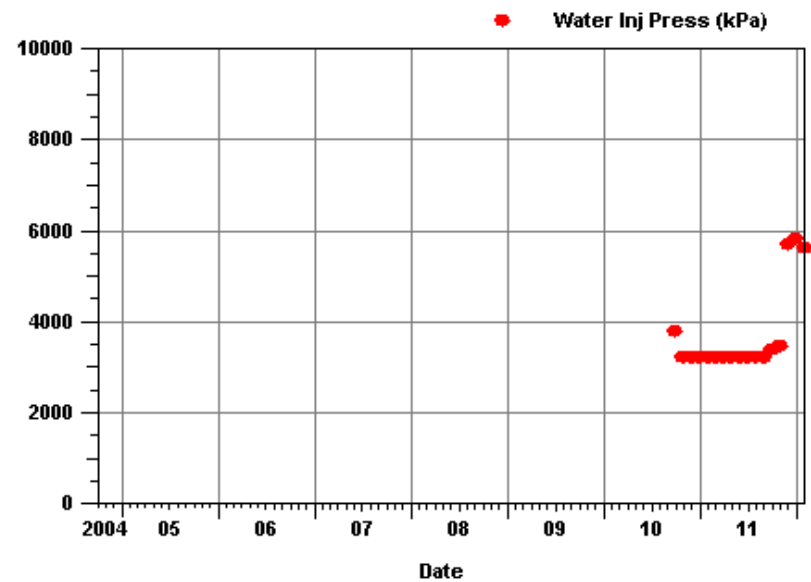
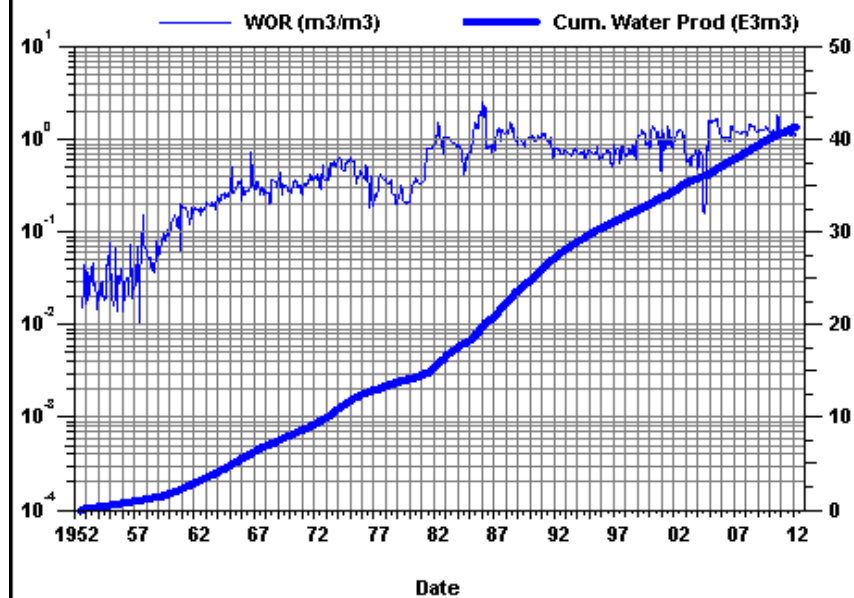
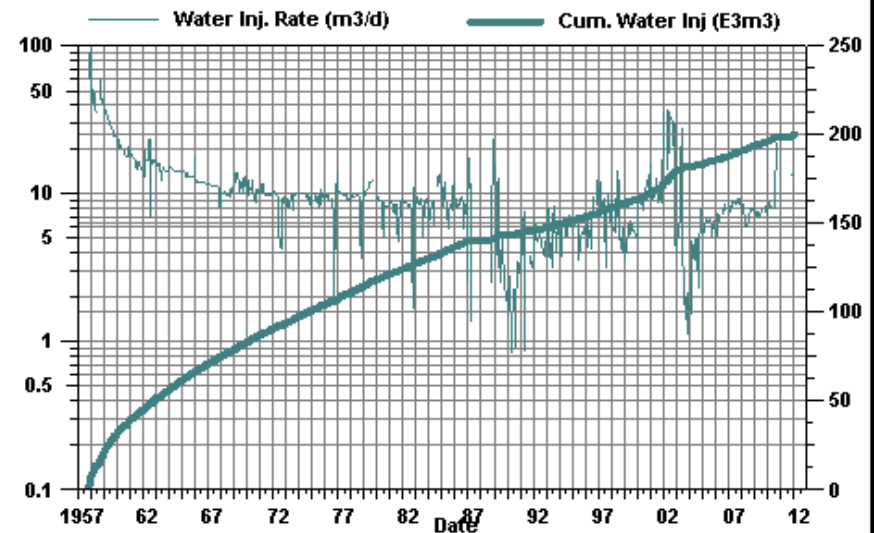
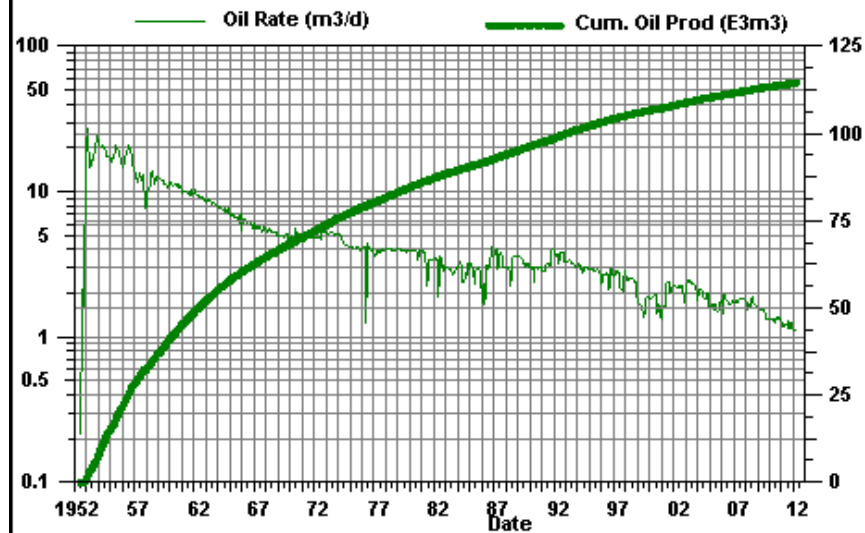
Daly Unit #3 PAT 02-11



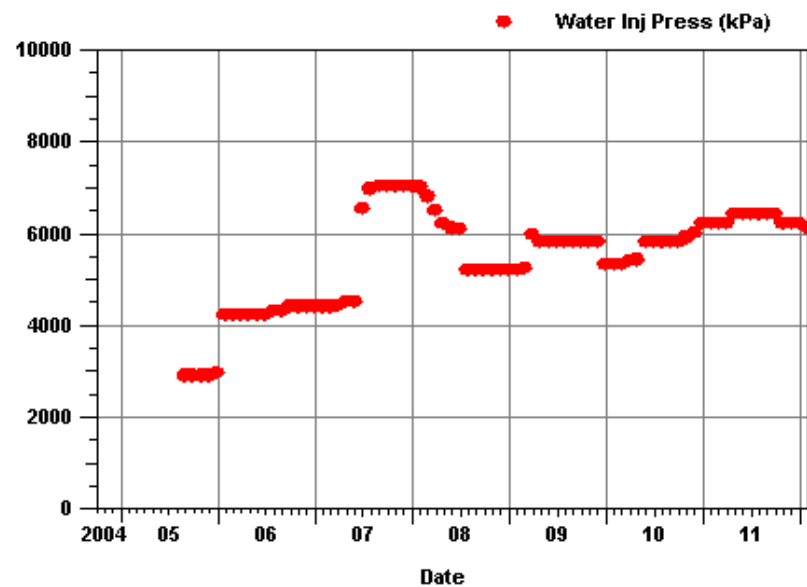
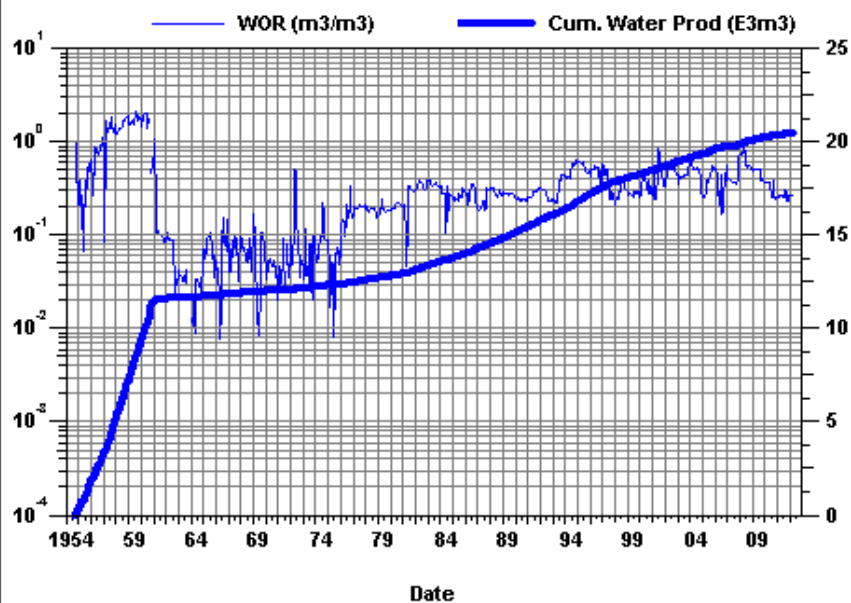
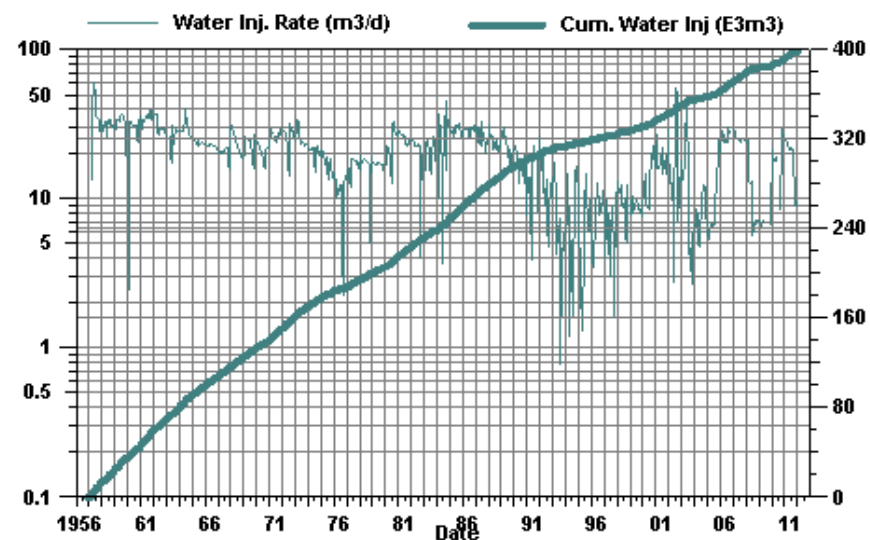
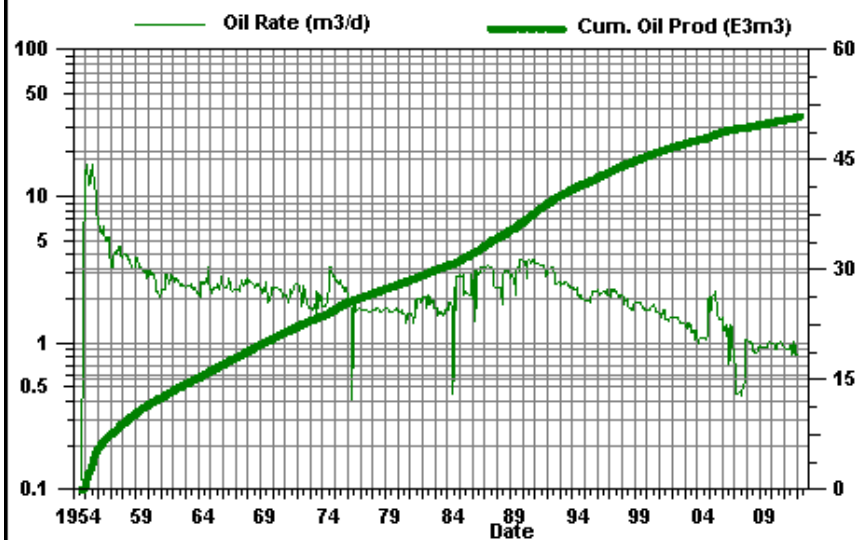
Daly Unit #3 PAT 02-12



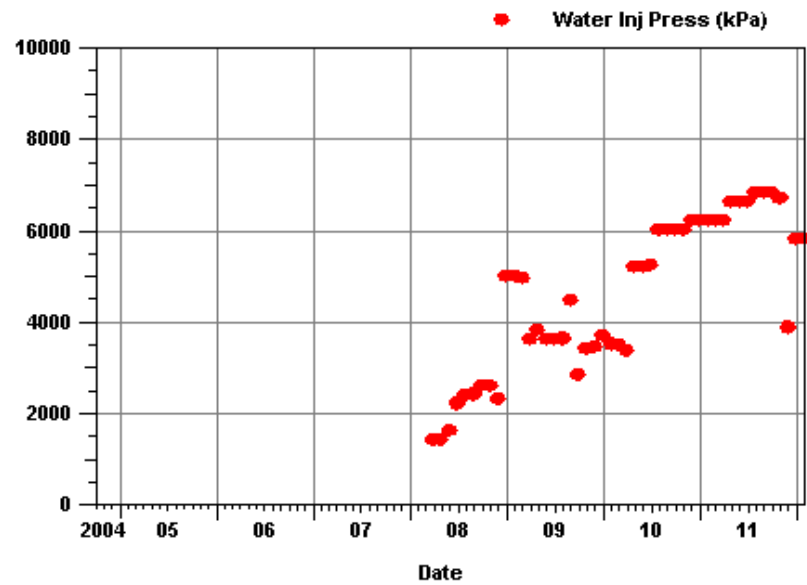
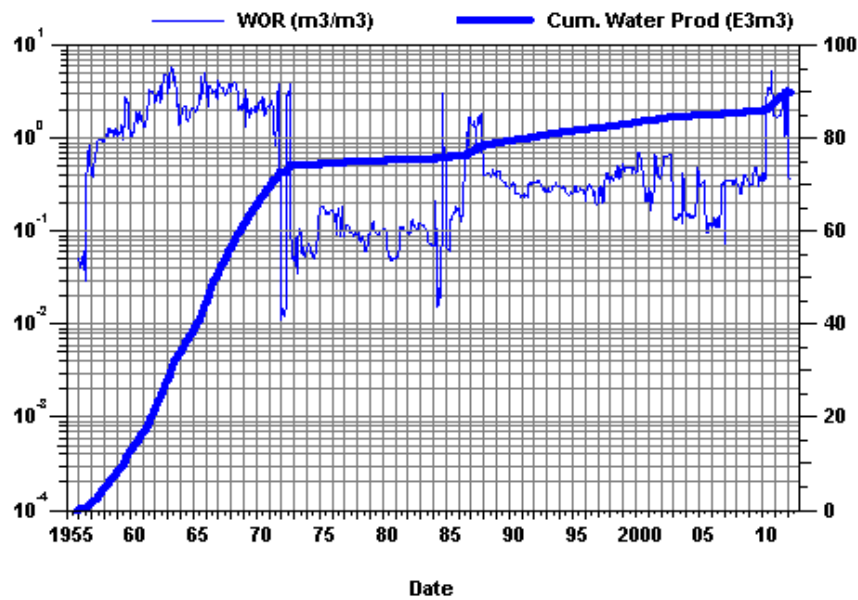
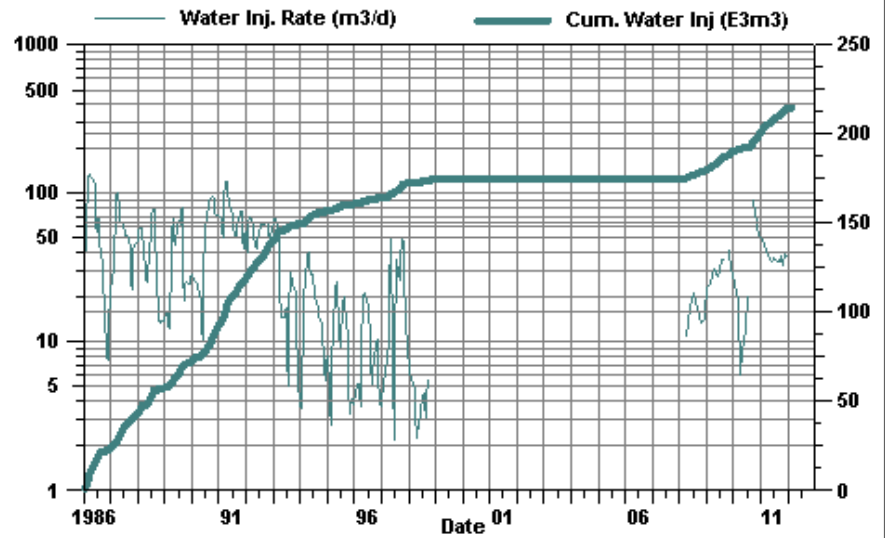
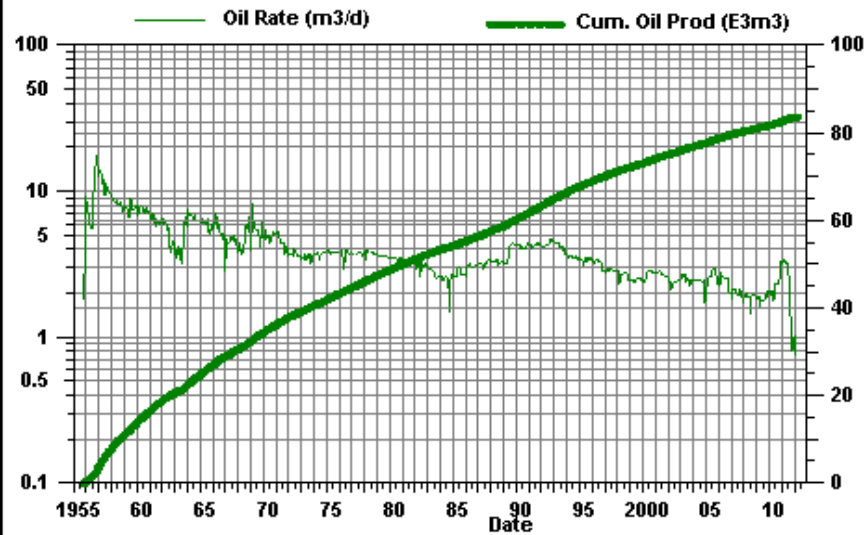
Daly Unit #3 PAT 04-12



Daly Unit #3 PAT 04-13

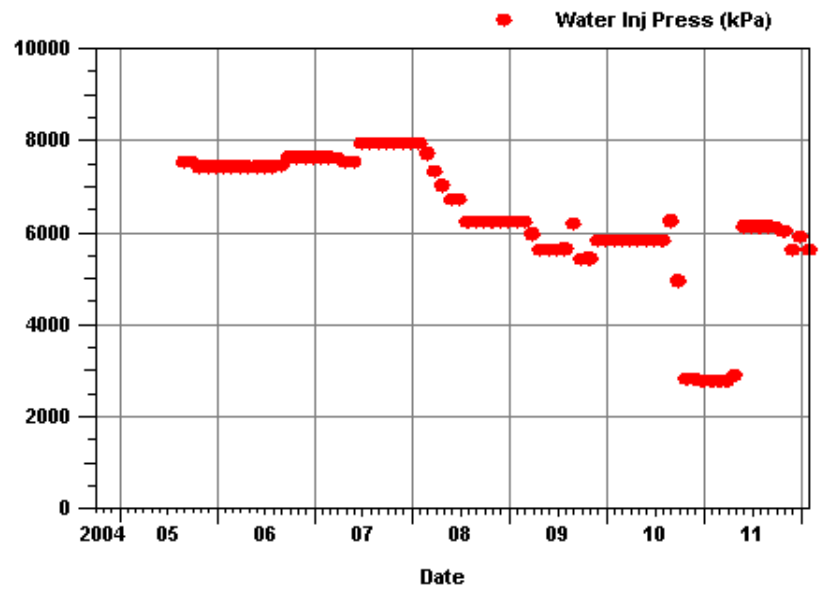
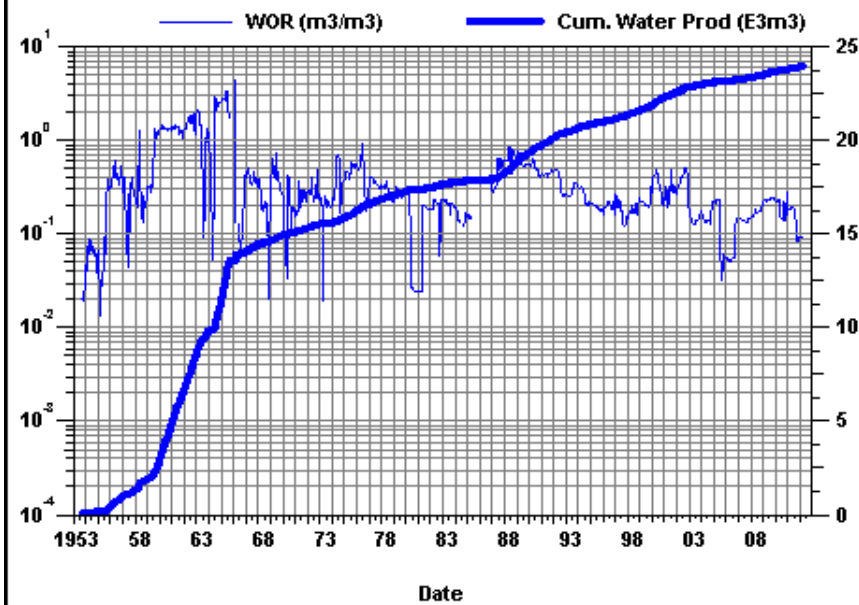
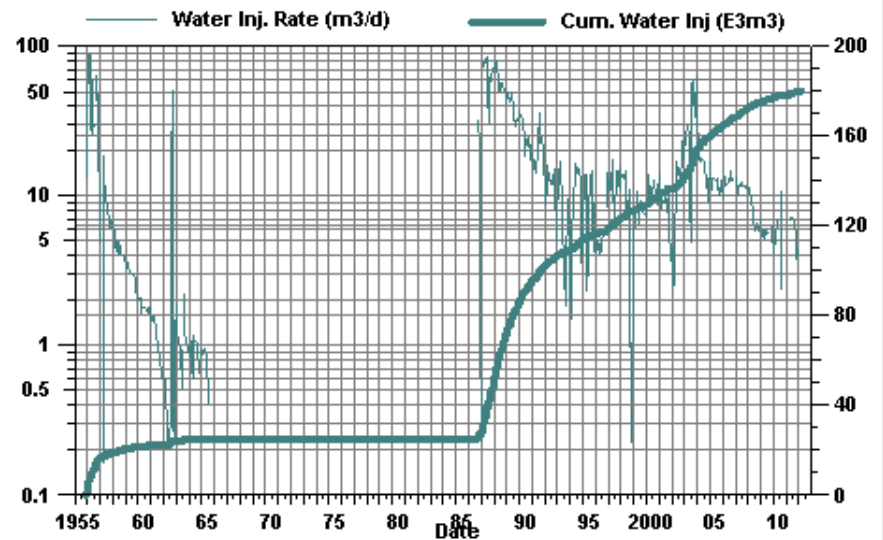
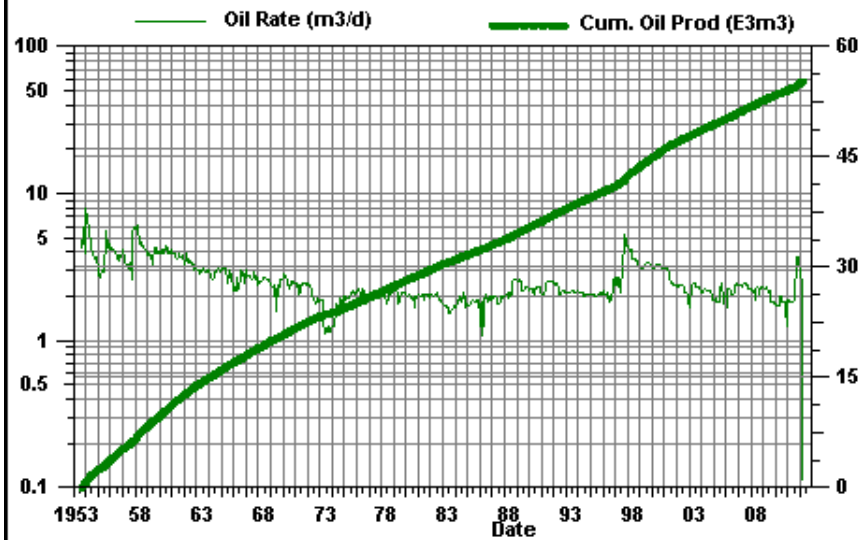


Daly Unit #3 PAT 04-14

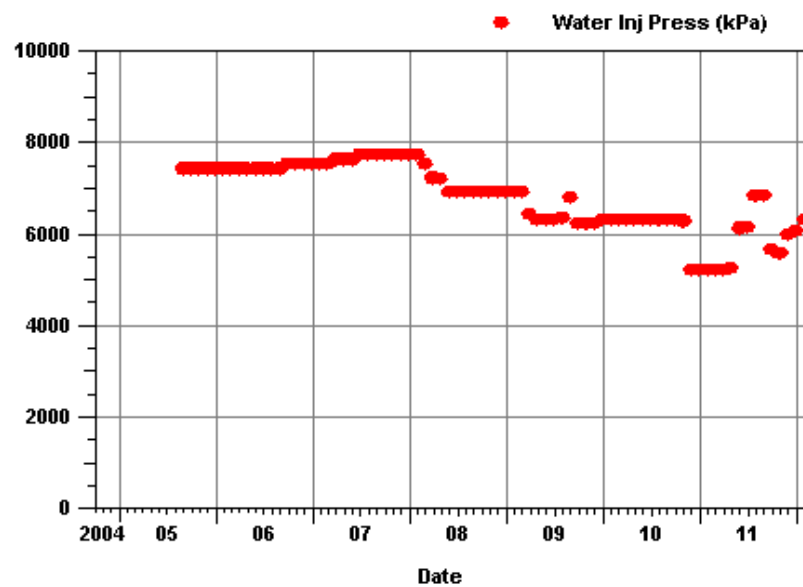
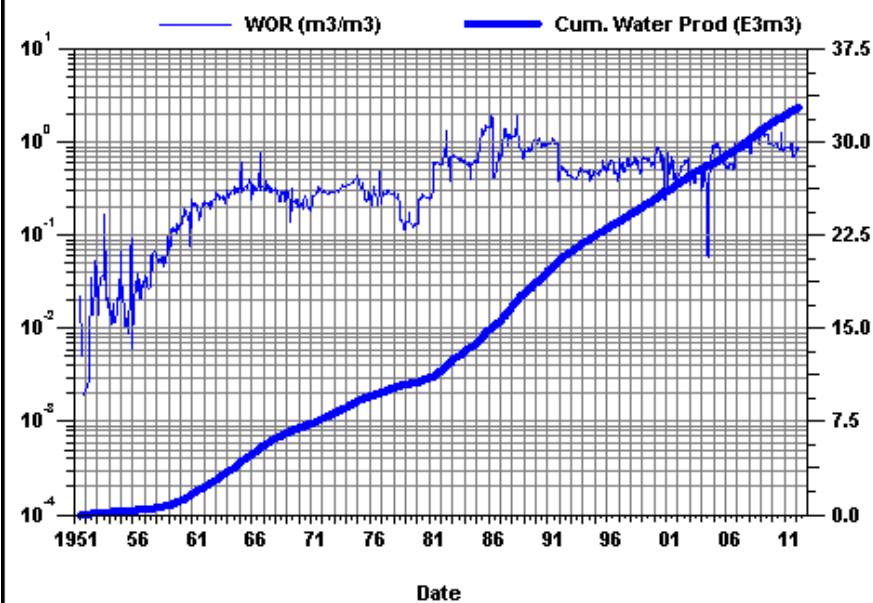
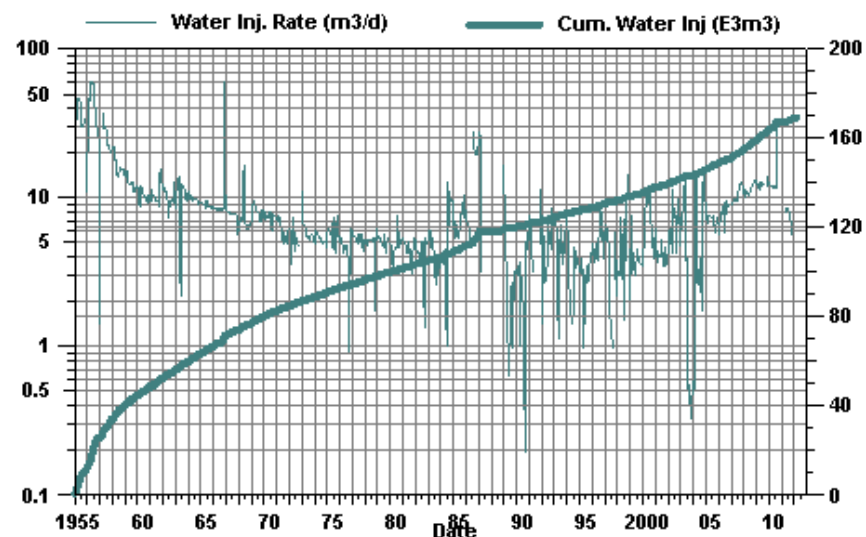
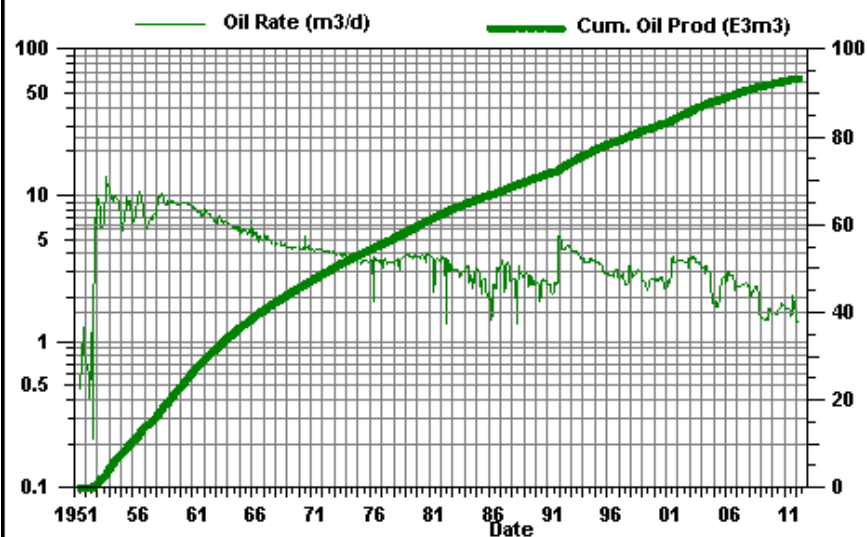


Daly Unit #3

PAT 06-11

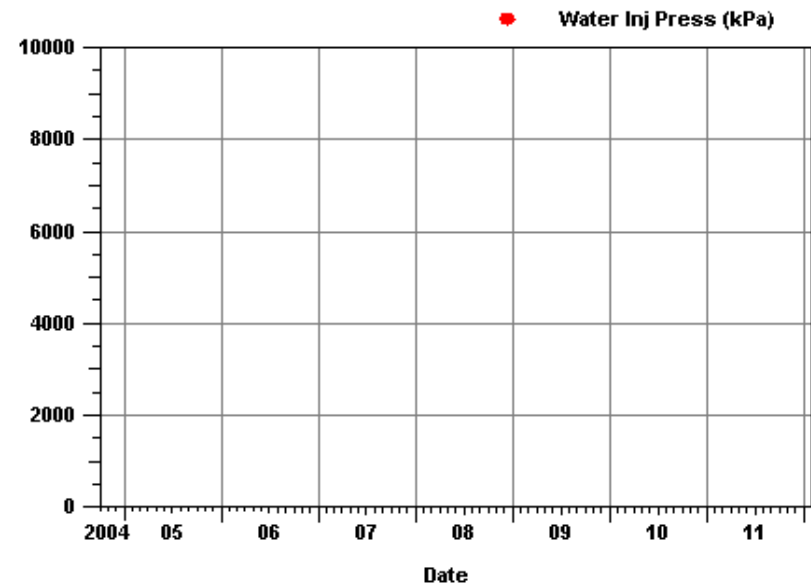
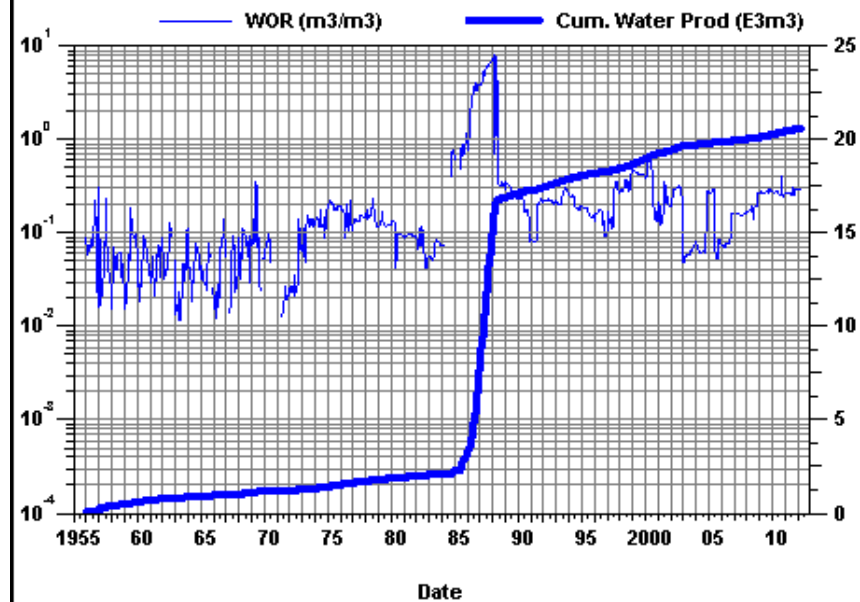
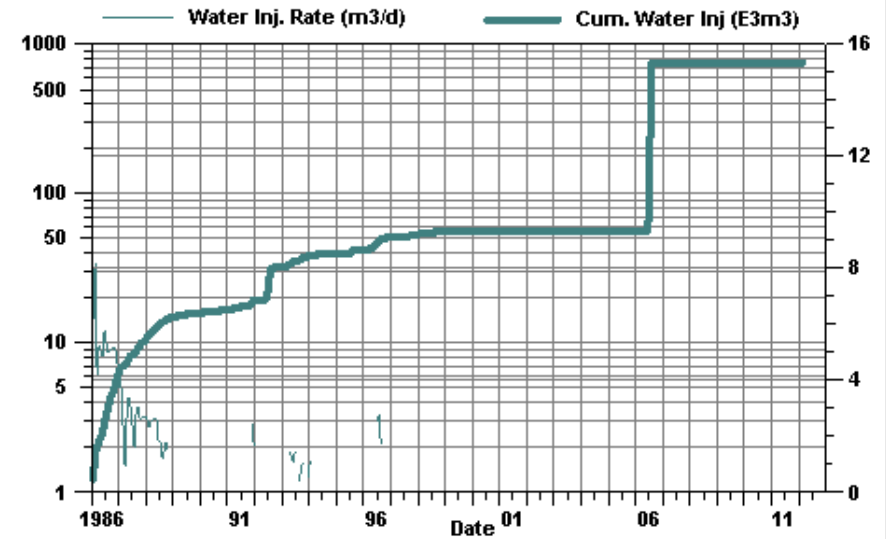
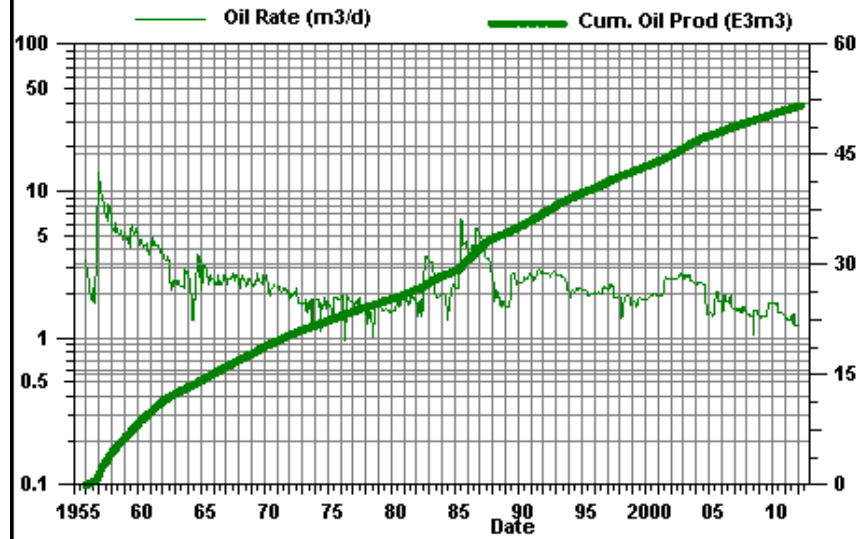


Daly Unit #3 PAT 06-12



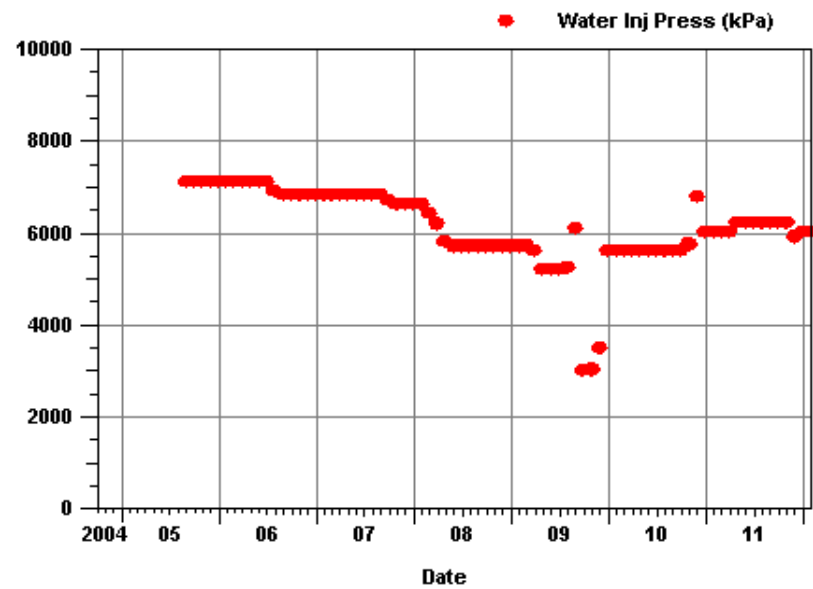
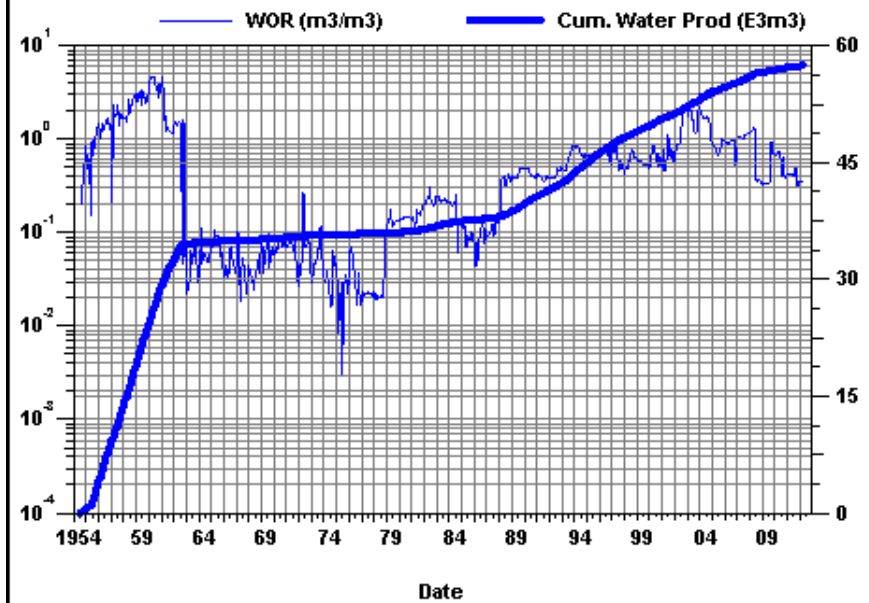
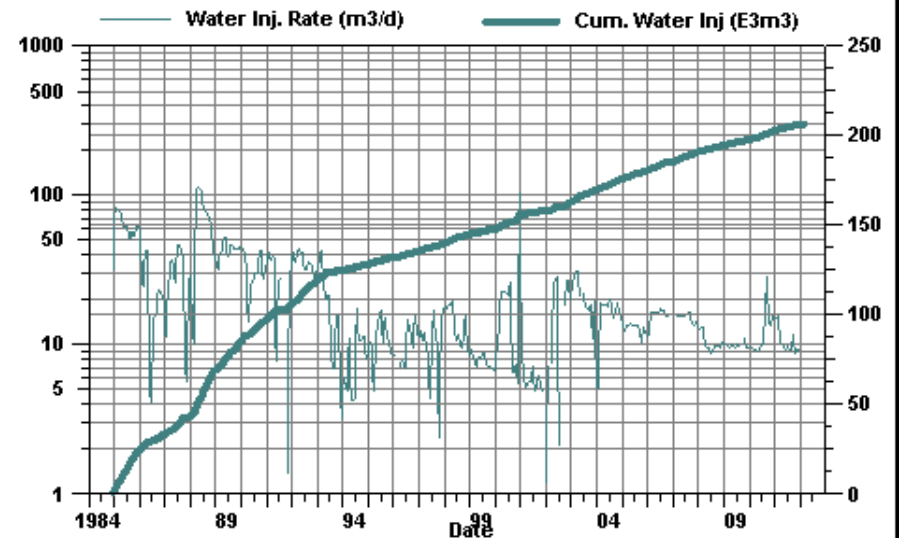
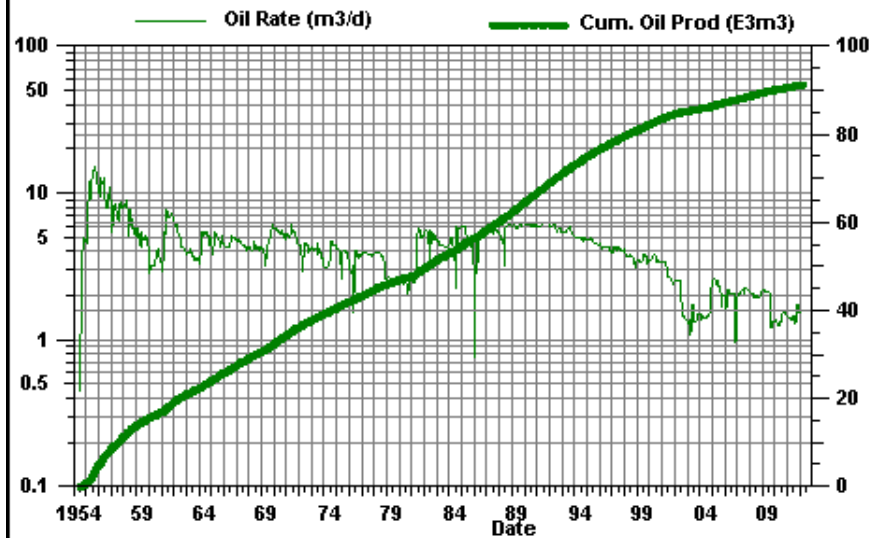
Daly Unit #3

PAT 06-14

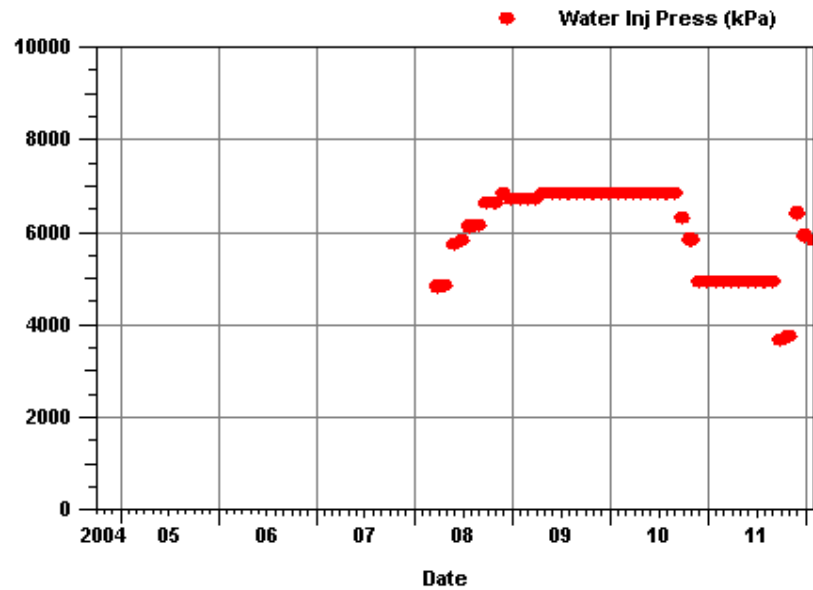
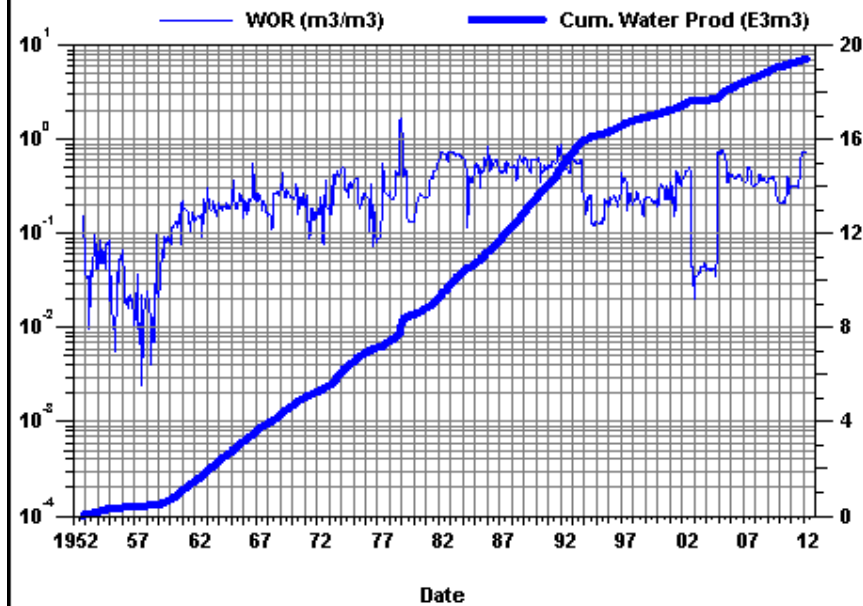
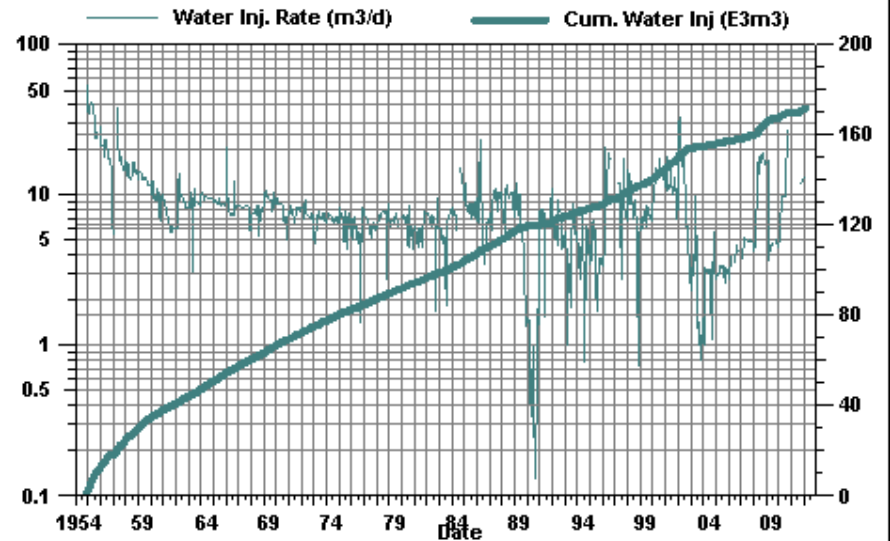
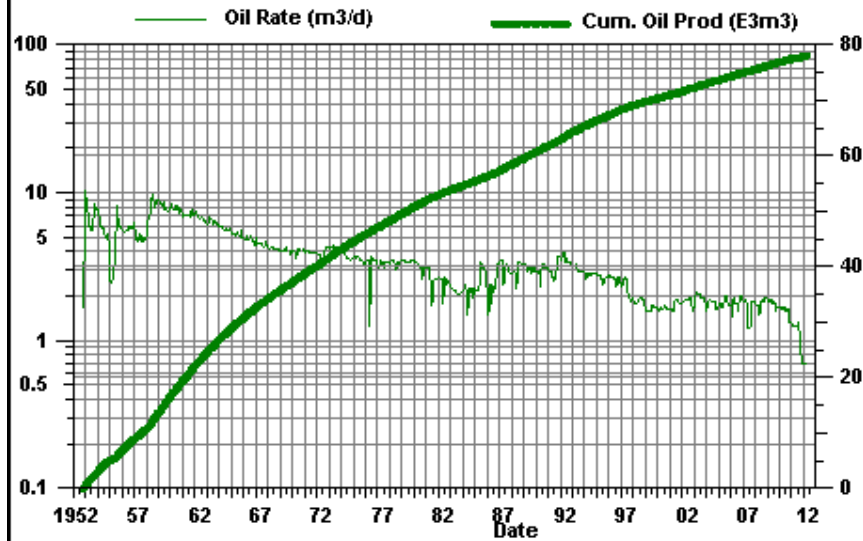


Daly Unit #3

PAT 07-13

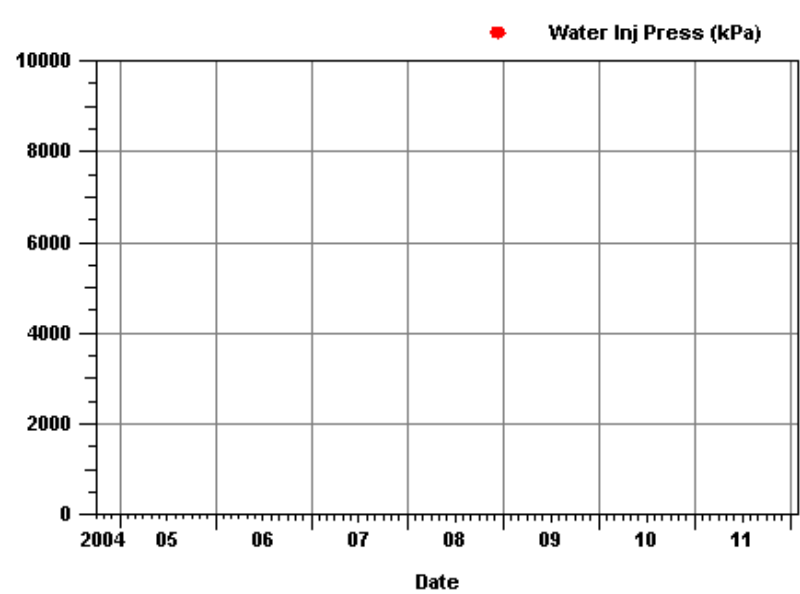
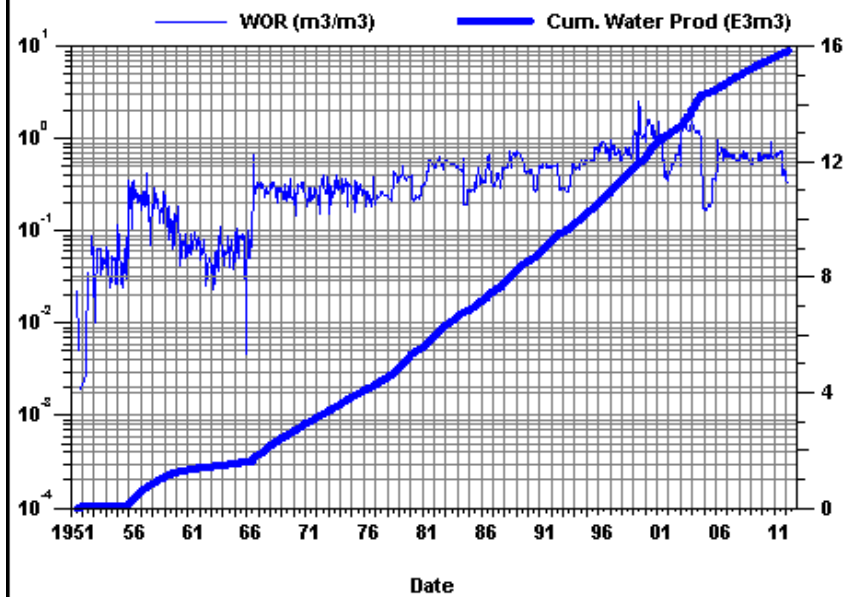
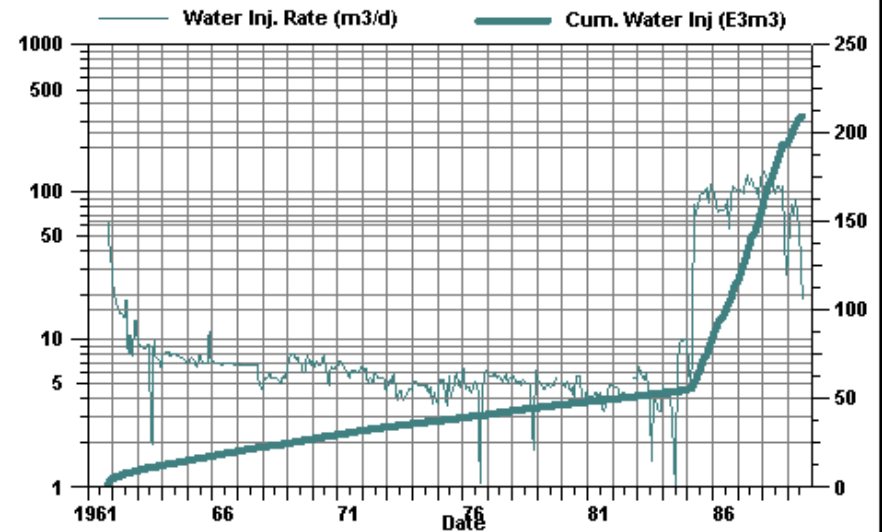
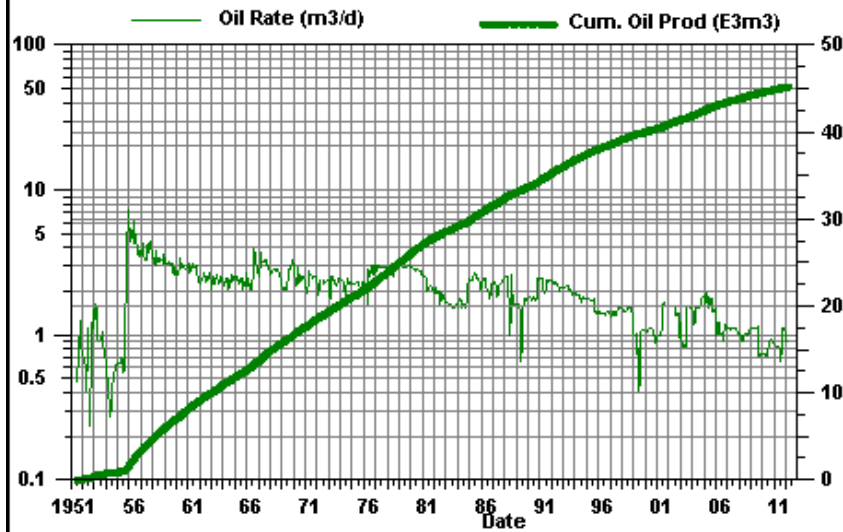


Daly Unit #3 PAT 08-11



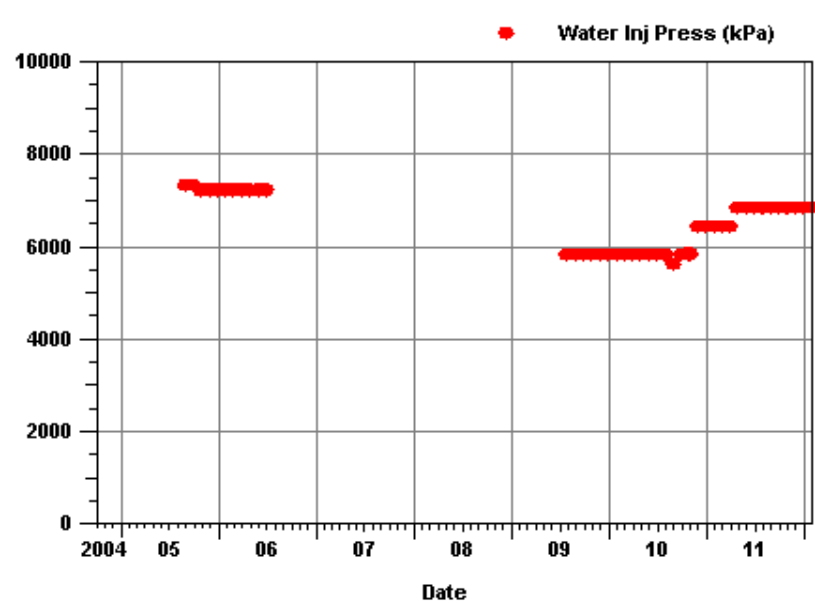
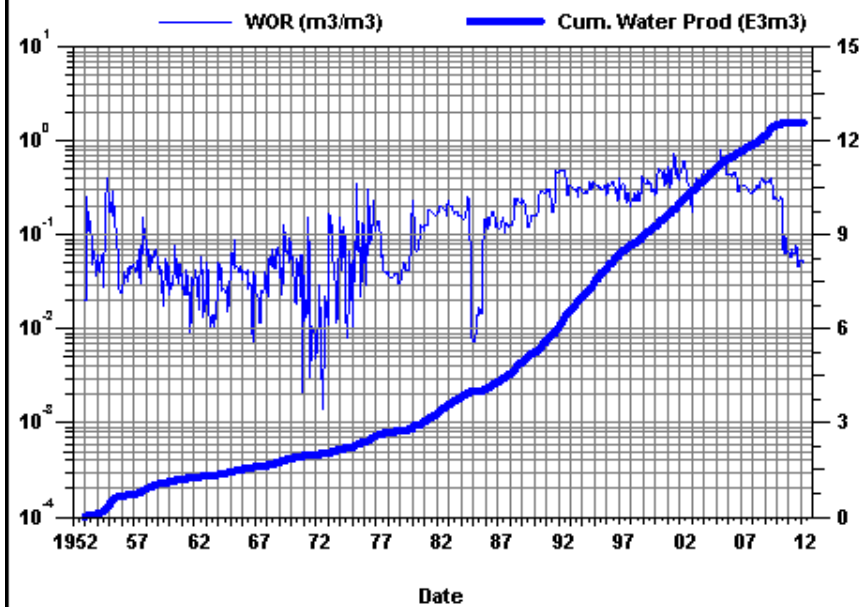
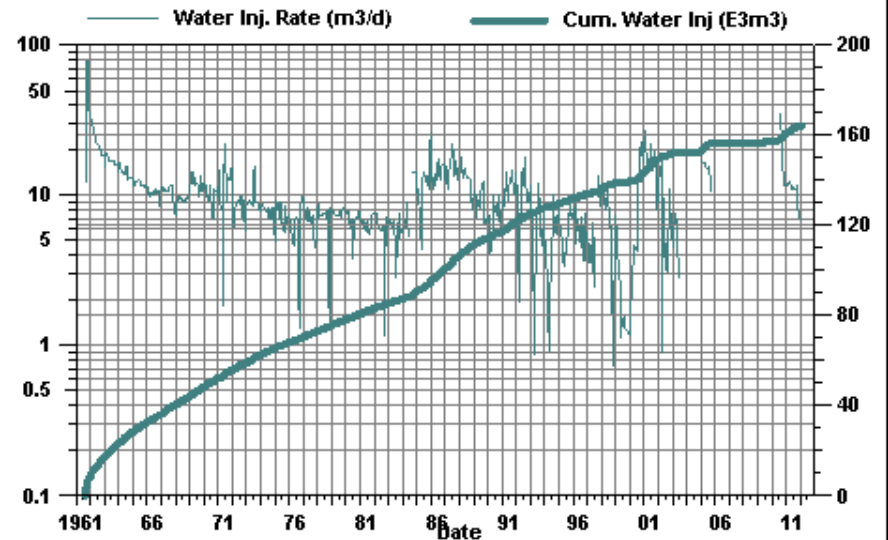
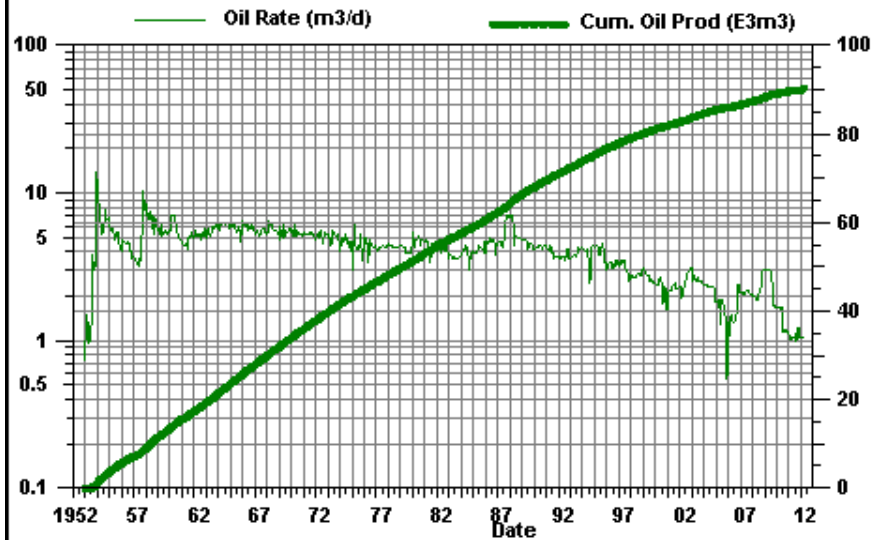
Daly Unit #3

PAT 08-12

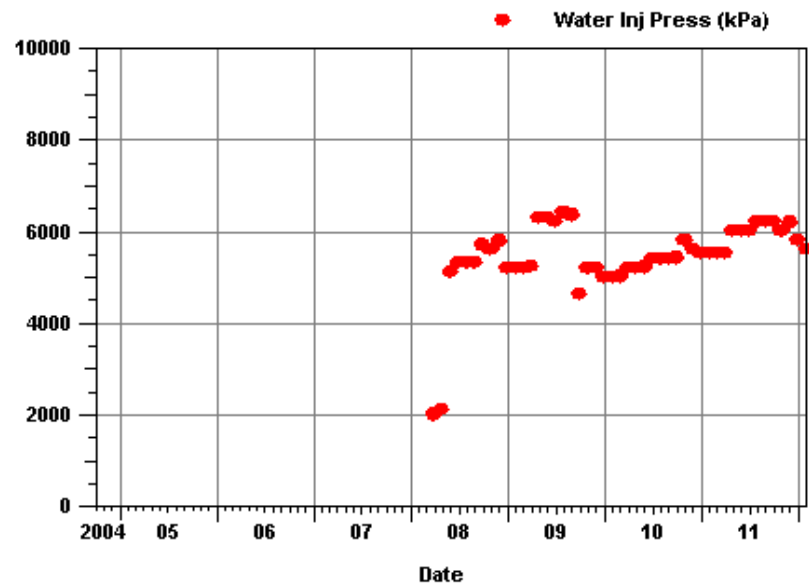
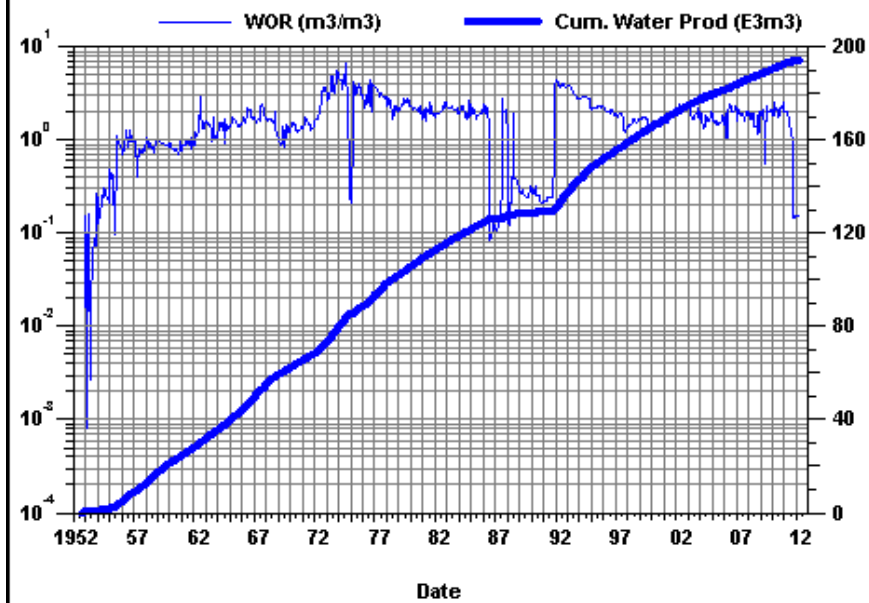
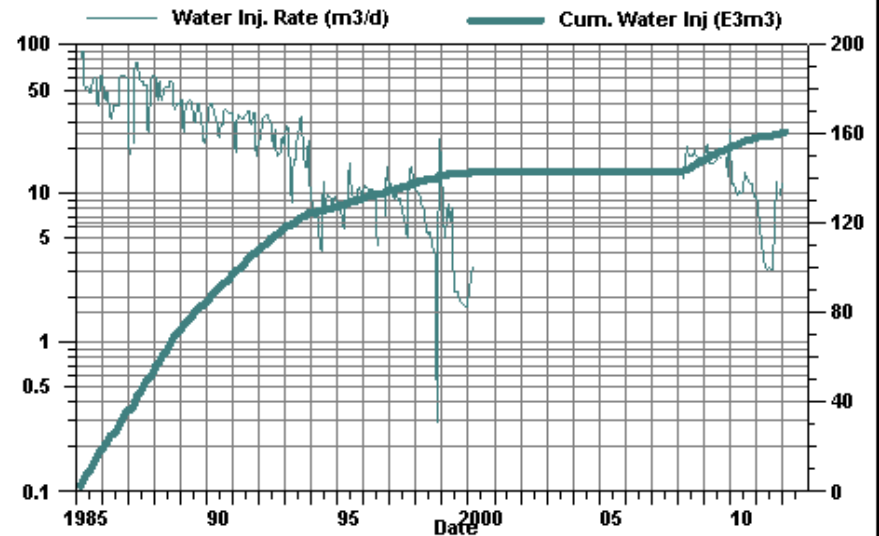
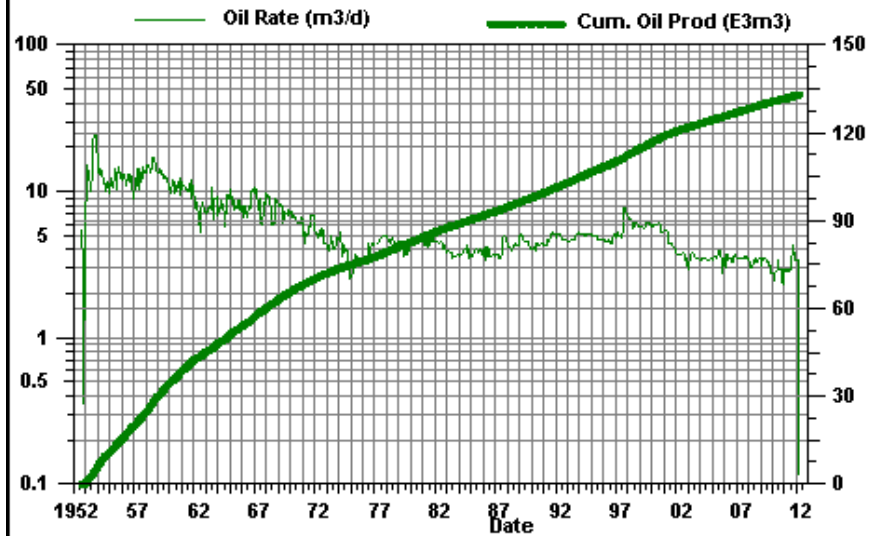


Daly Unit #3

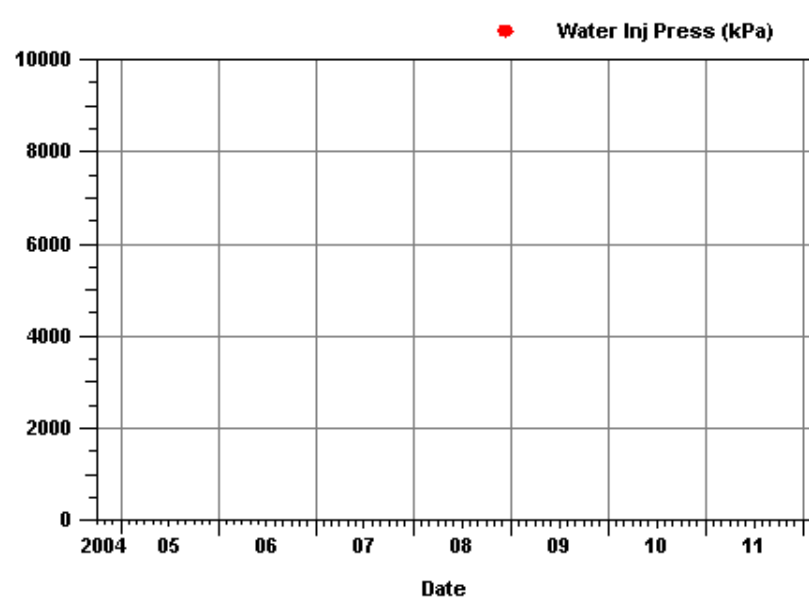
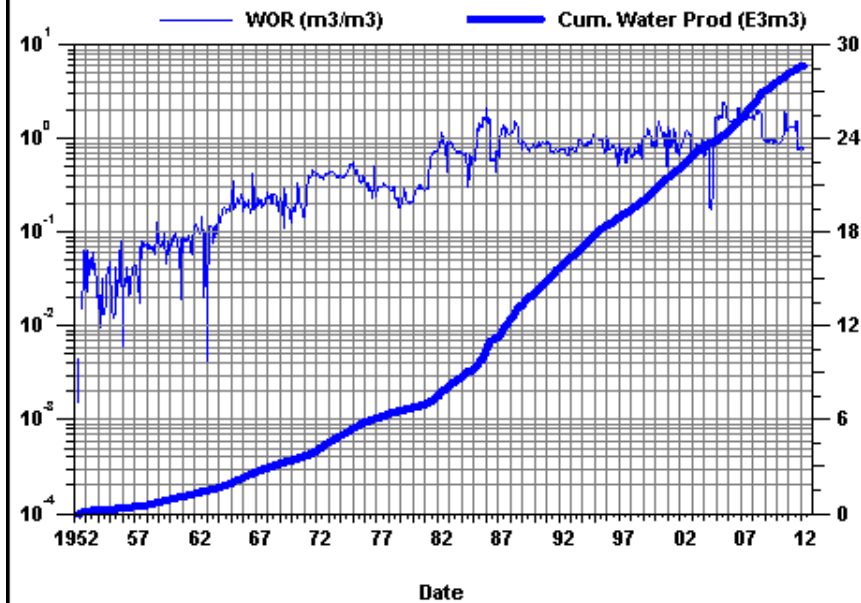
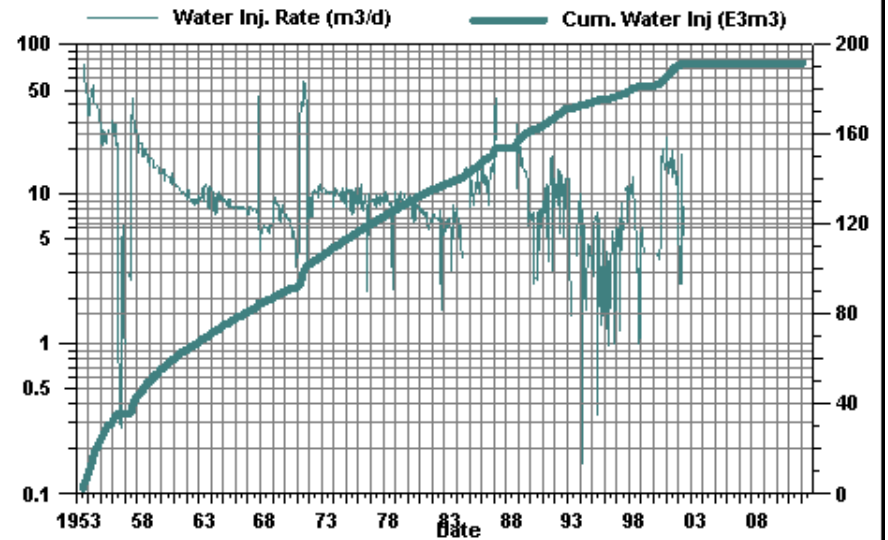
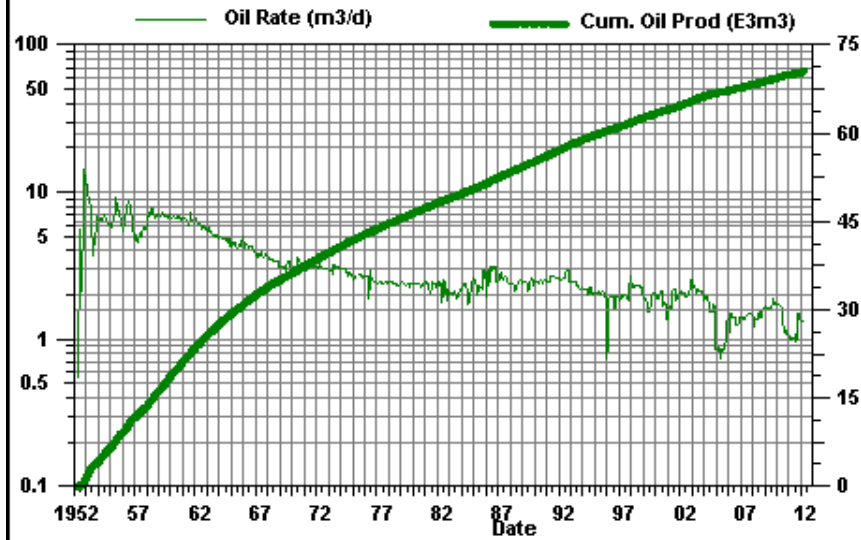
PAT 12-01



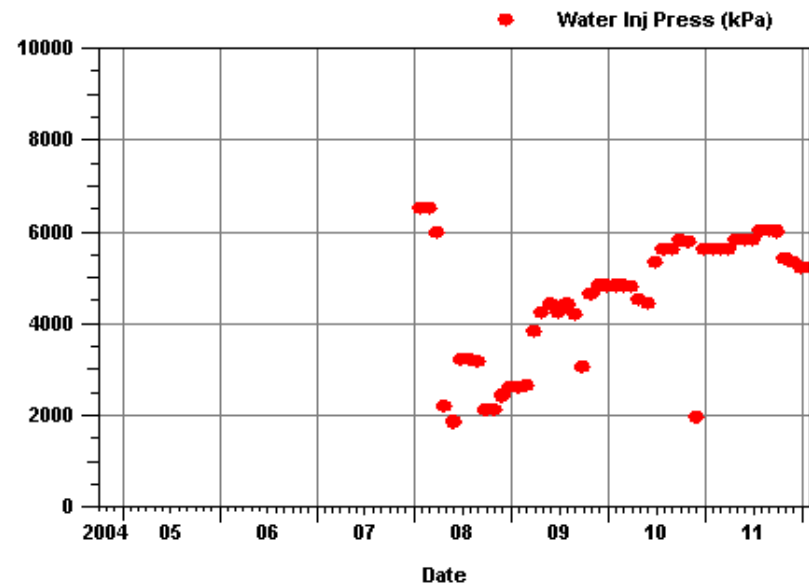
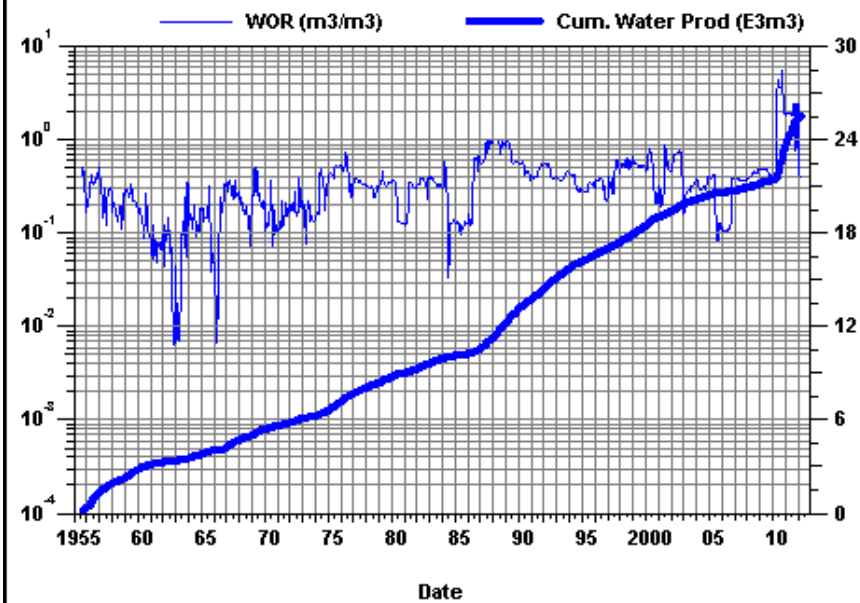
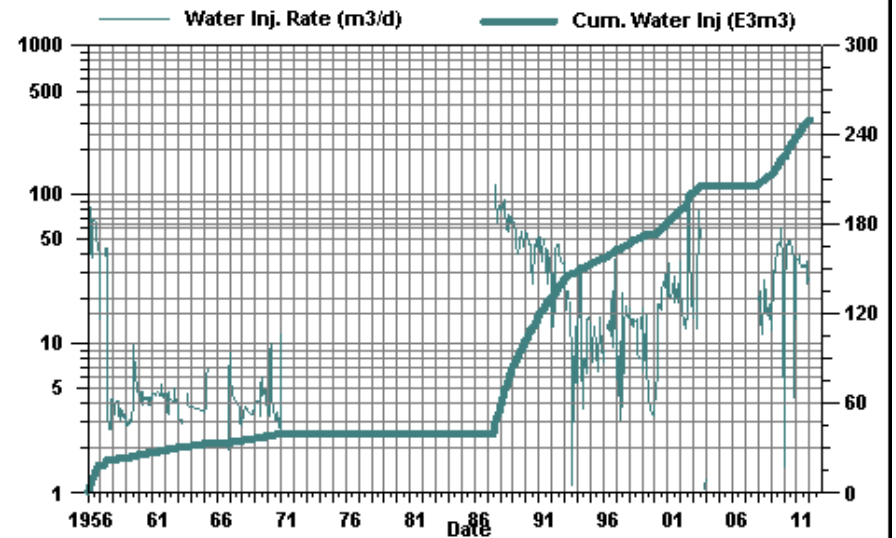
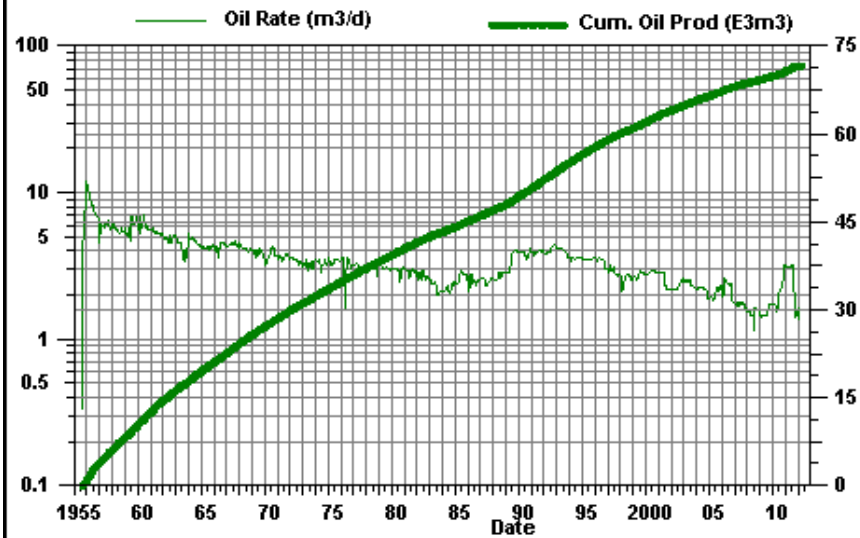
Daly Unit #3 PAT 13-02



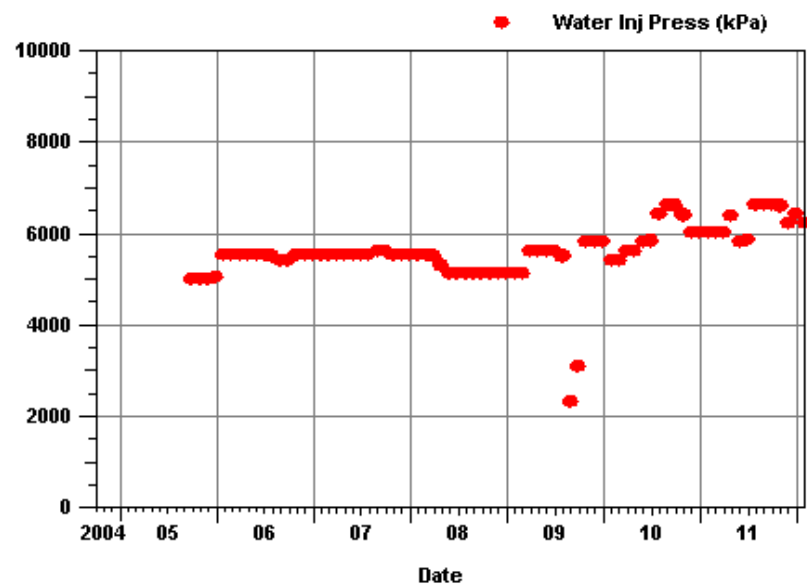
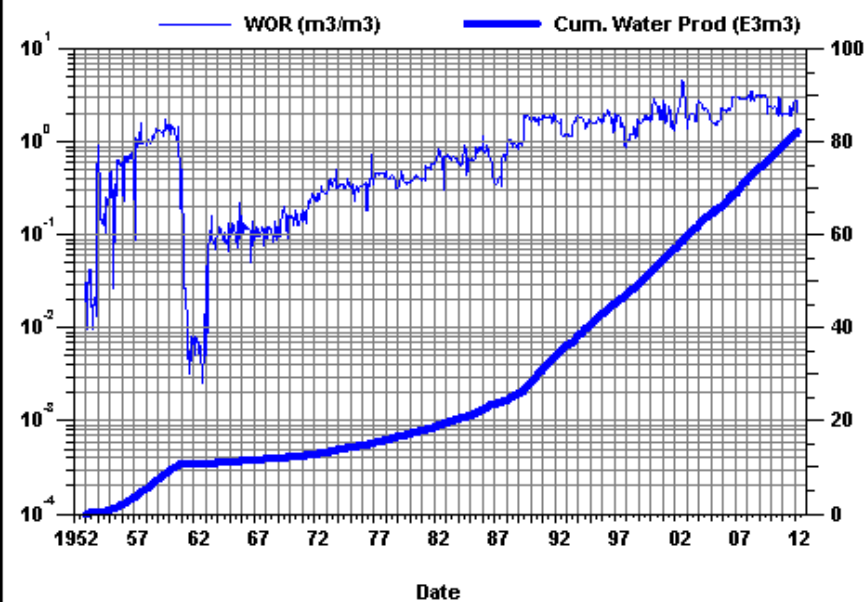
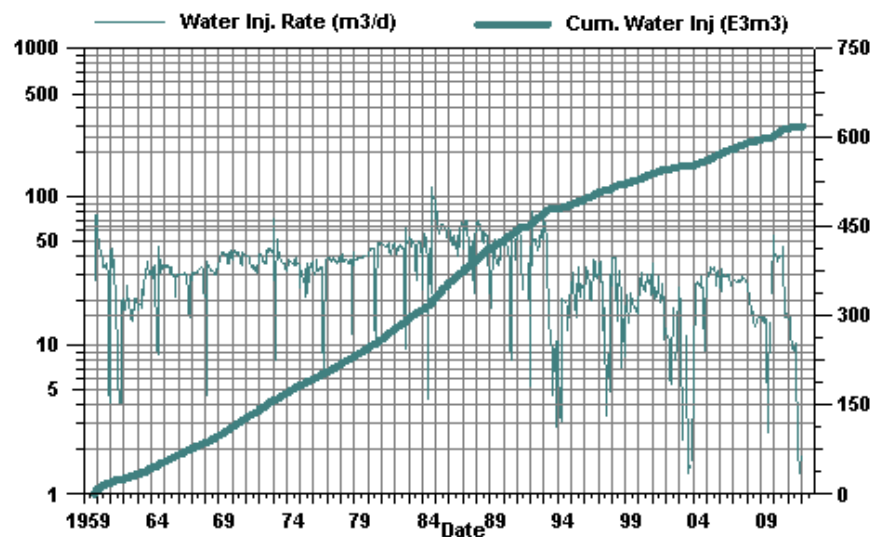
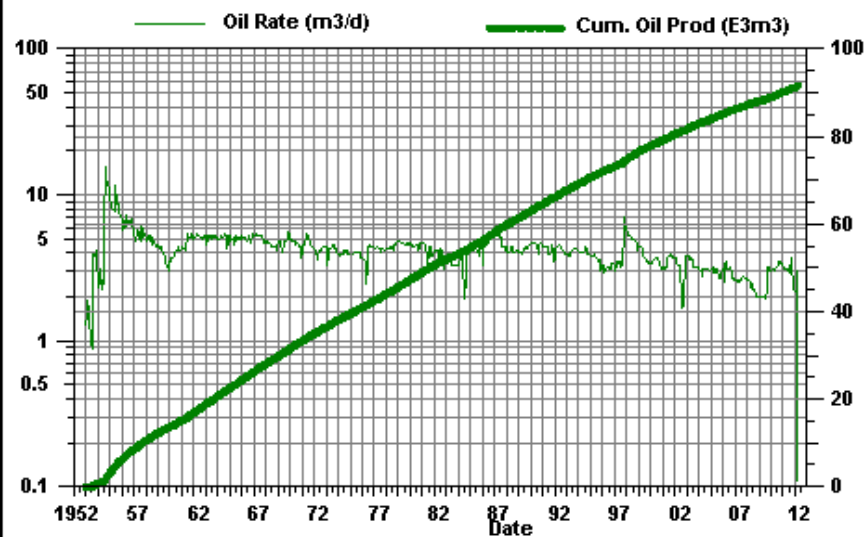
Daly Unit #3 PAT 14-01



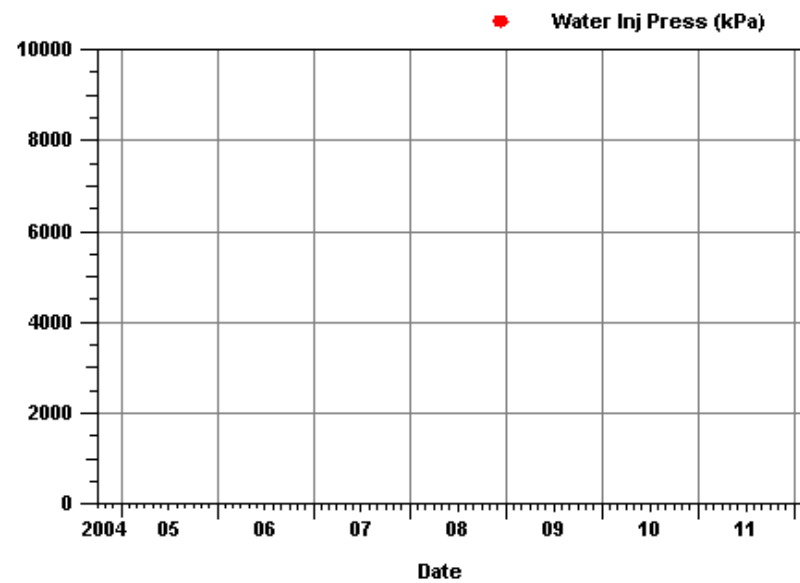
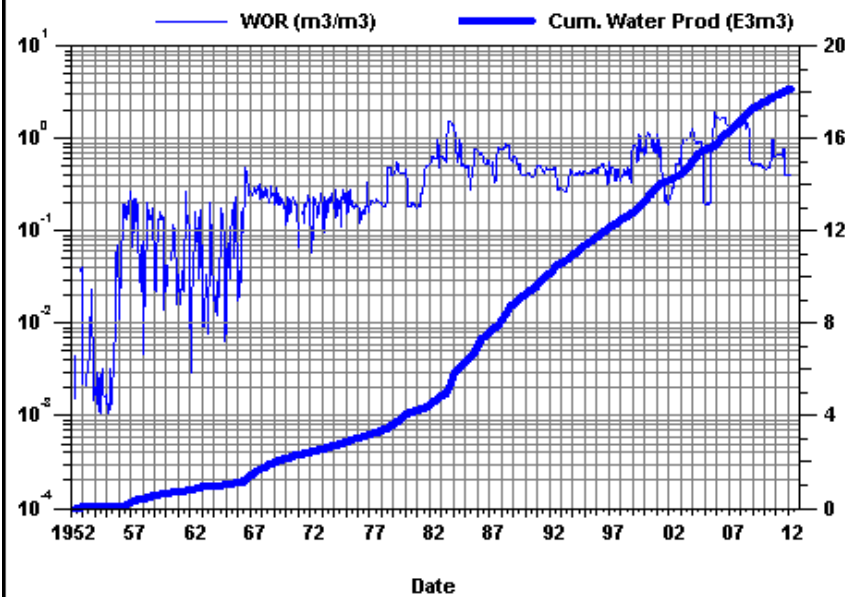
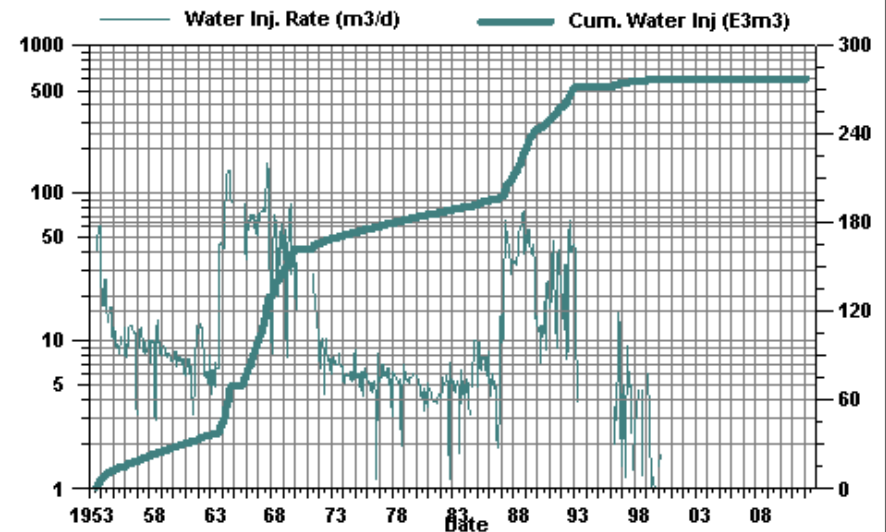
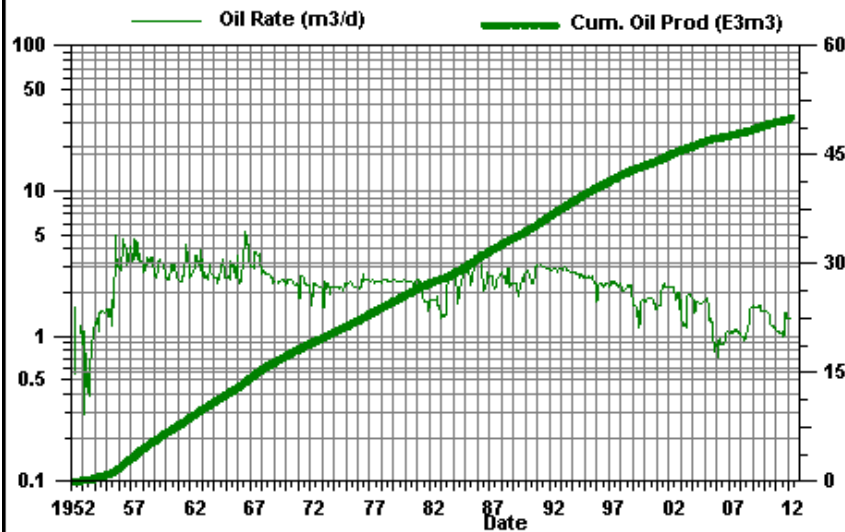
Daly Unit #3 PAT 14-11



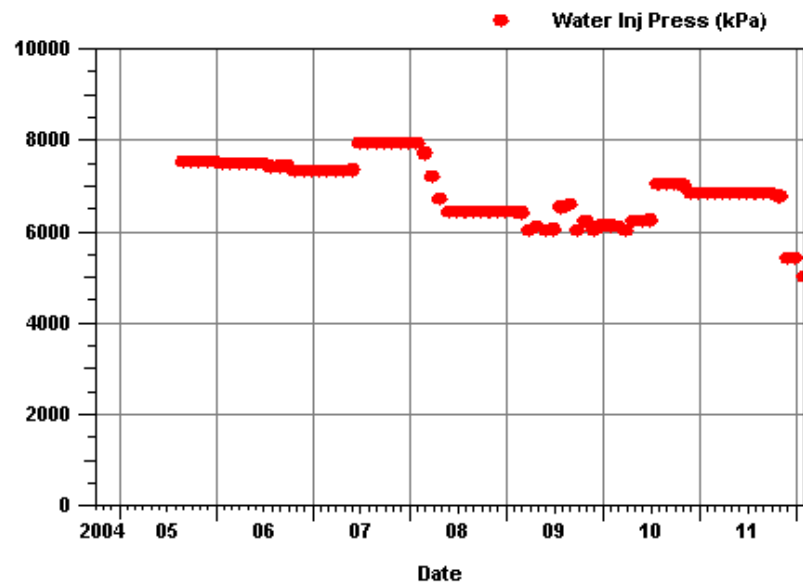
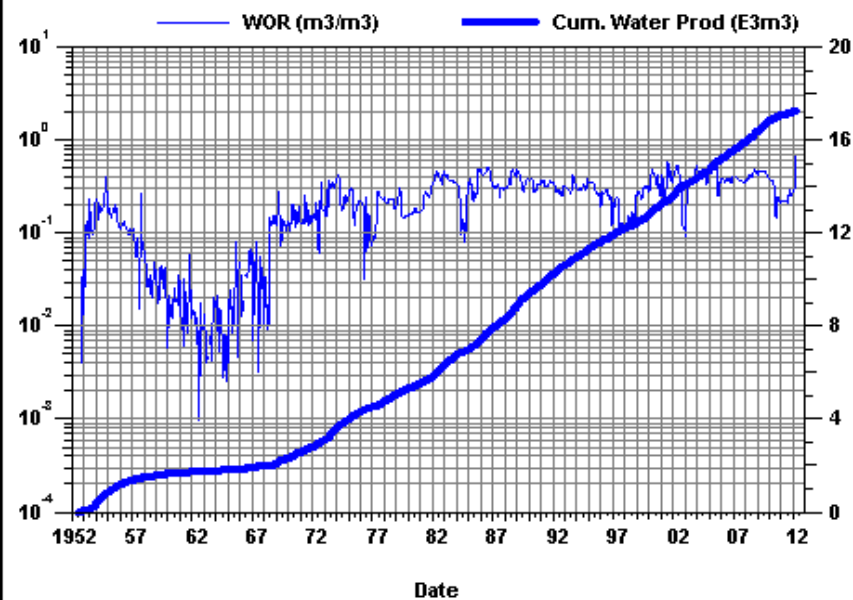
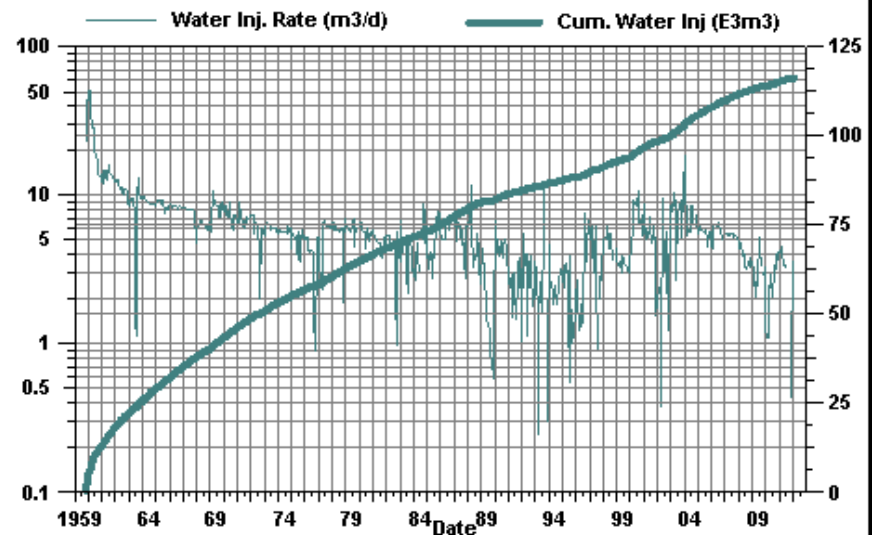
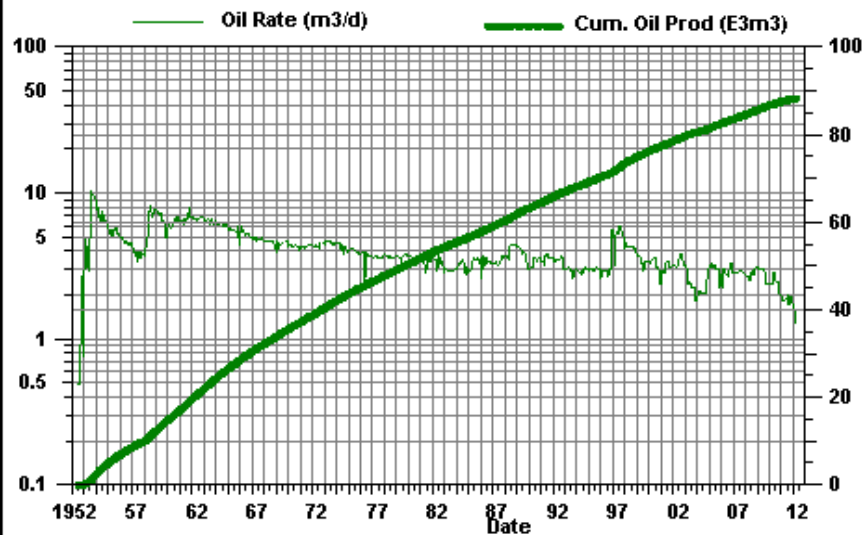
Daly Unit #3 PAT 14-12



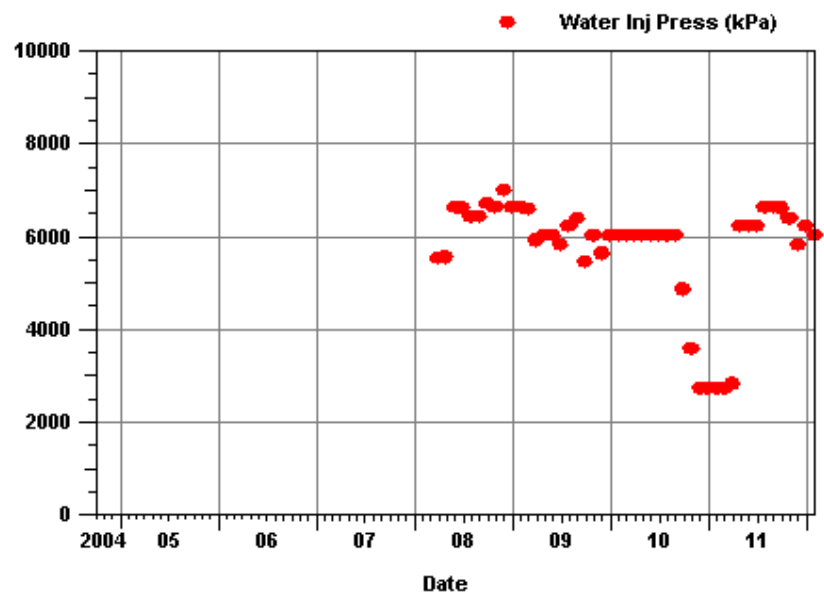
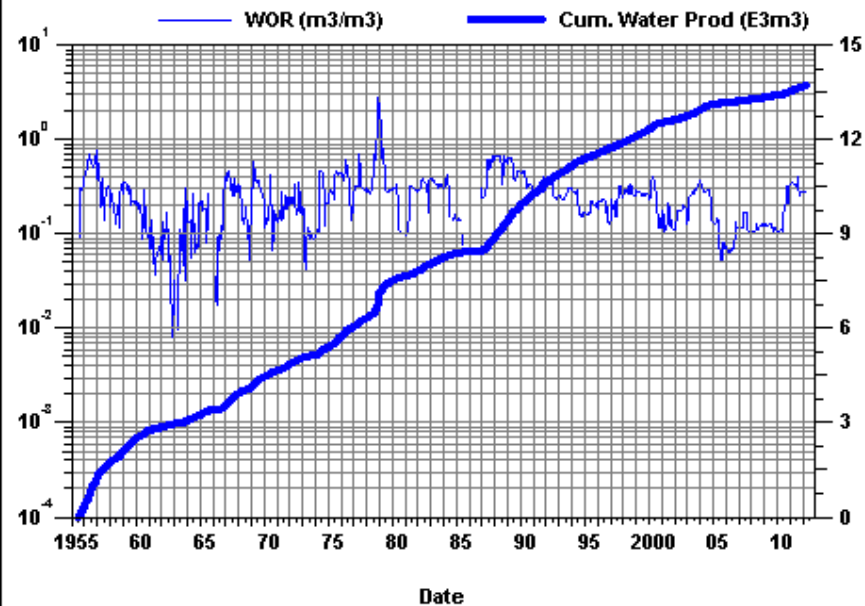
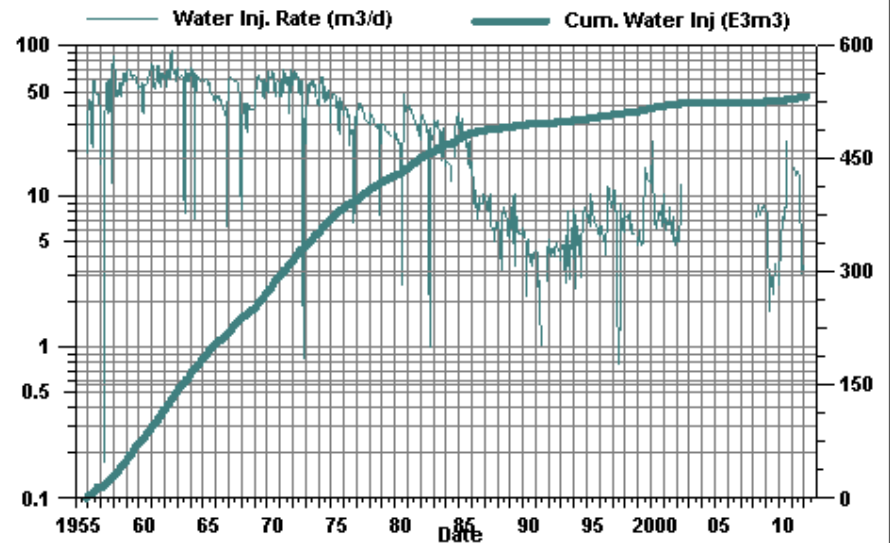
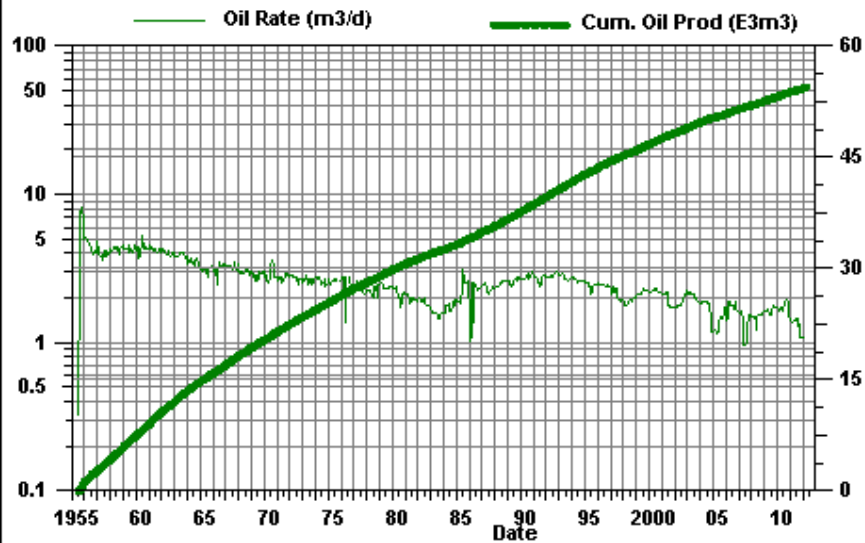
Daly Unit #3 PAT 16-01



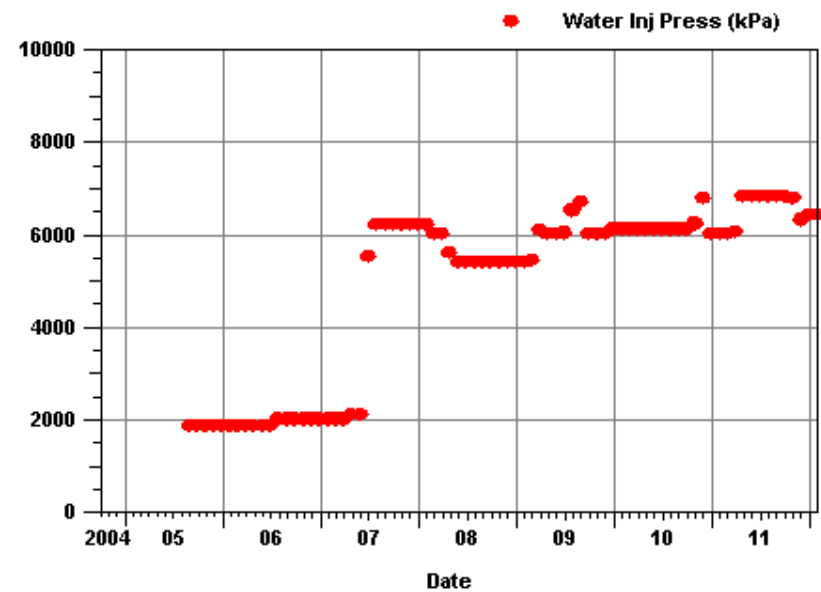
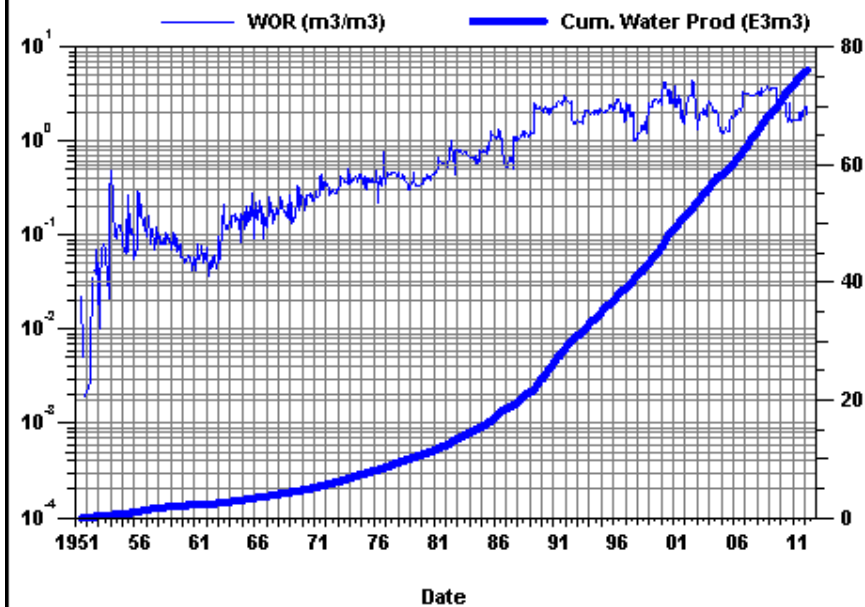
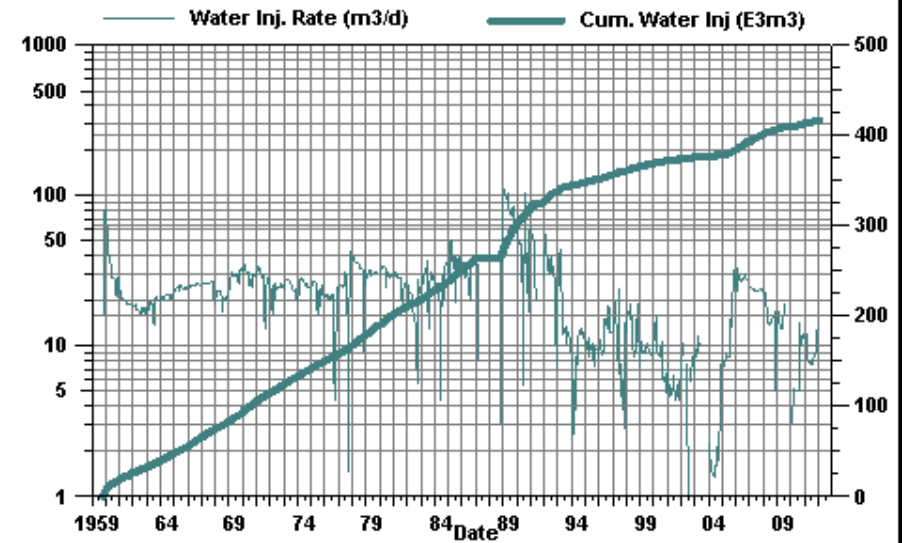
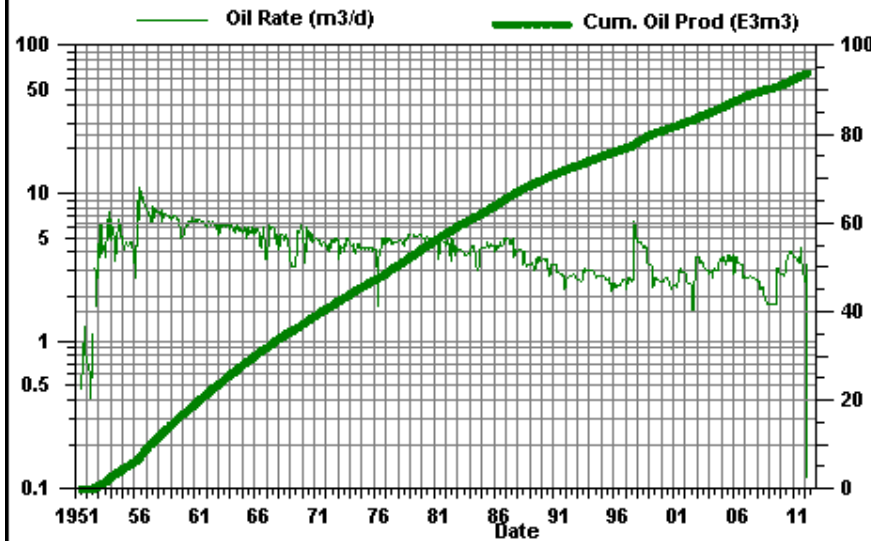
Daly Unit #3 PAT 16-02



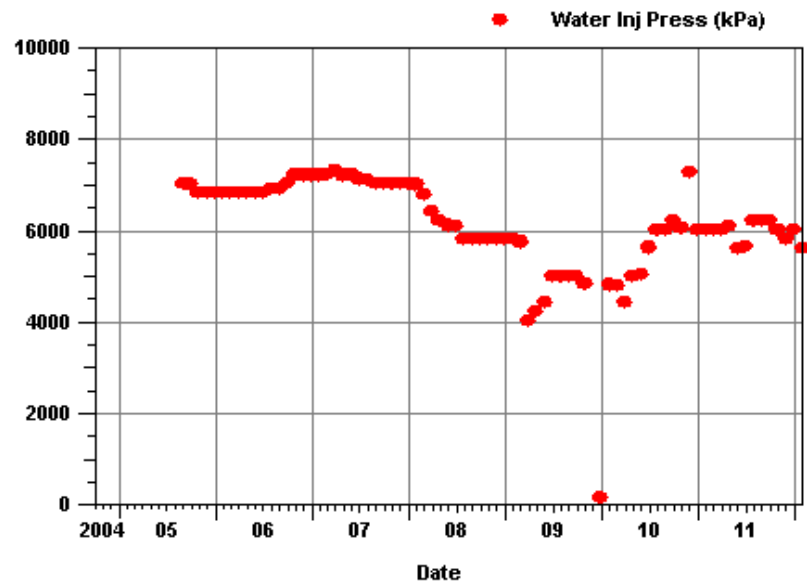
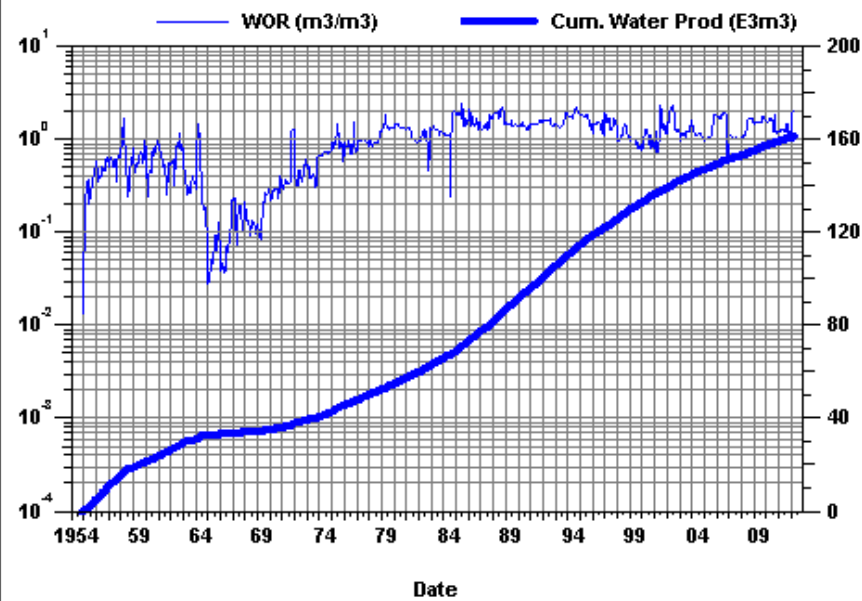
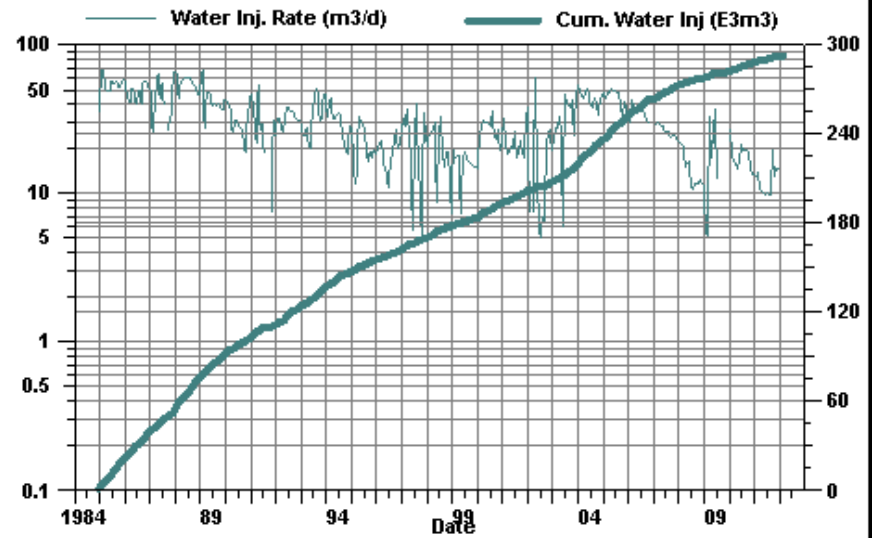
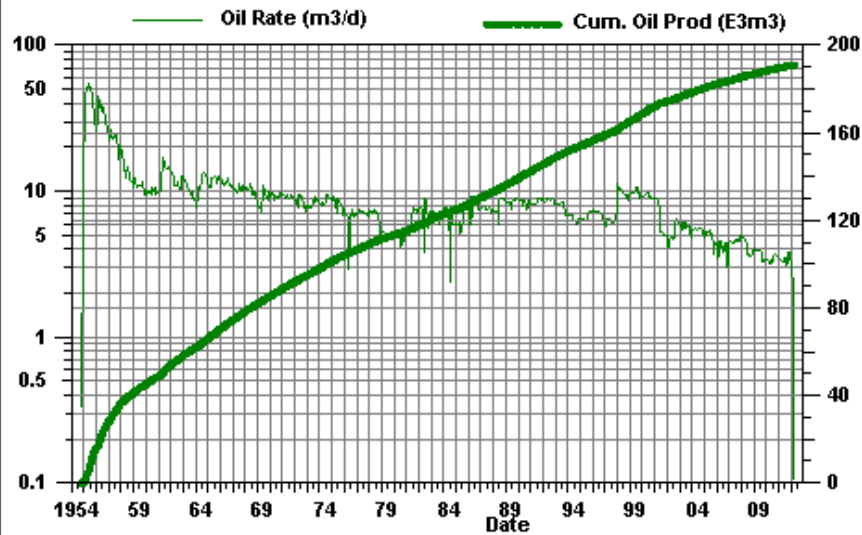
Daly Unit #3 PAT 10-11



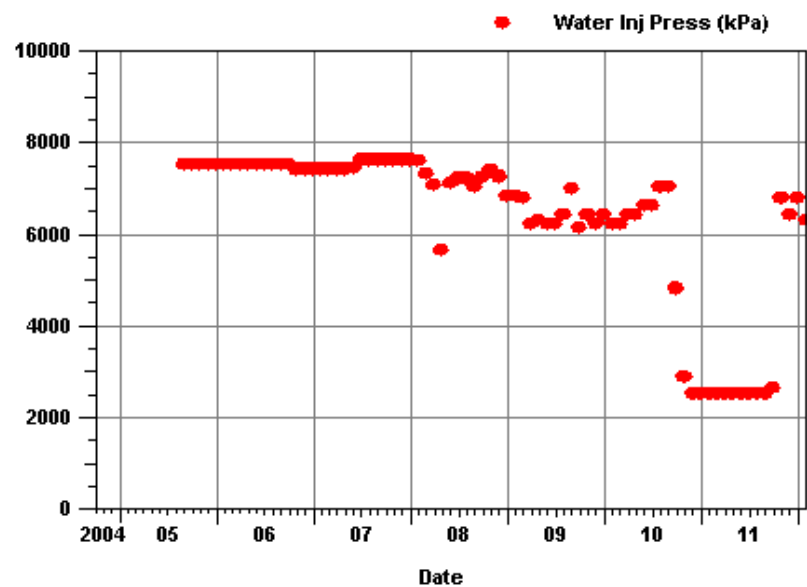
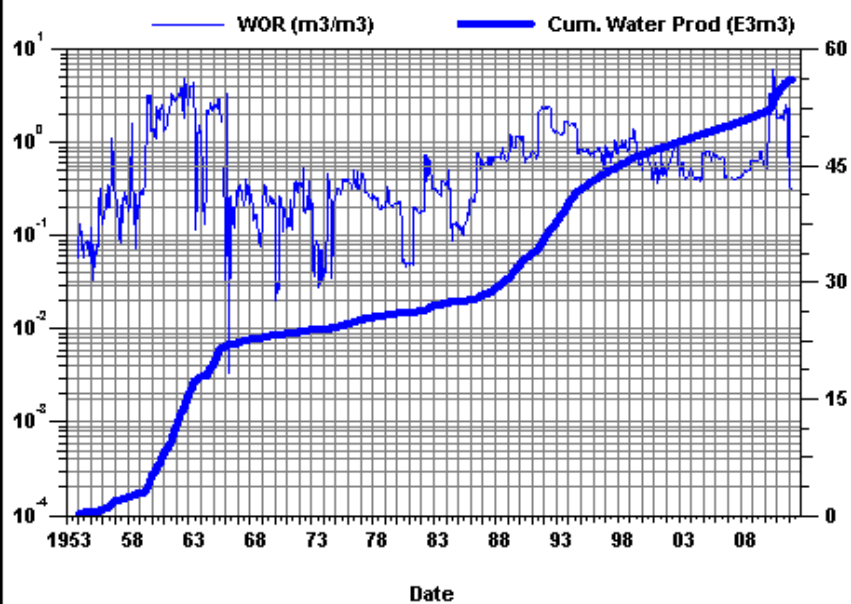
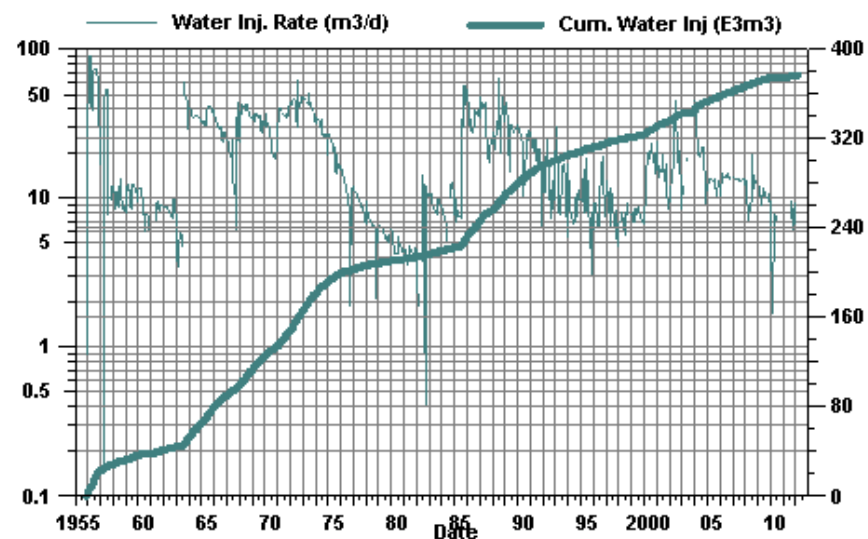
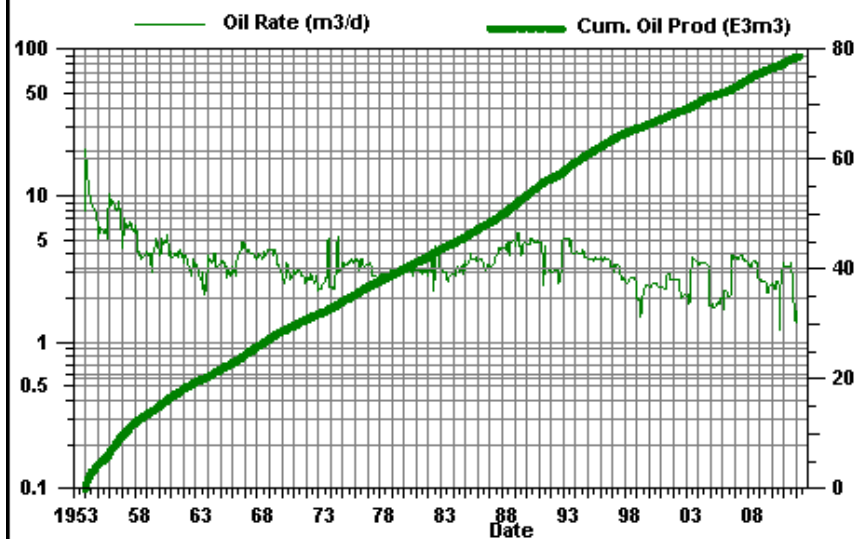
Daly Unit #3 PAT 10-12



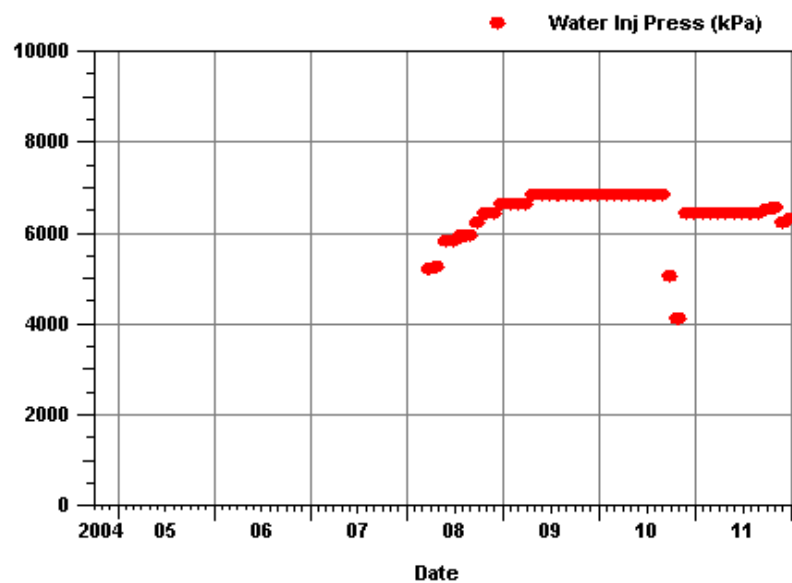
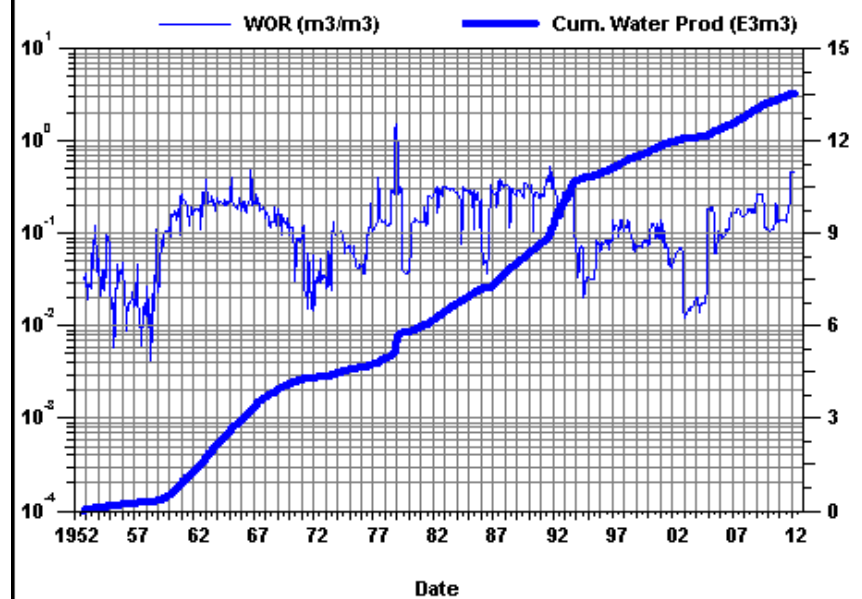
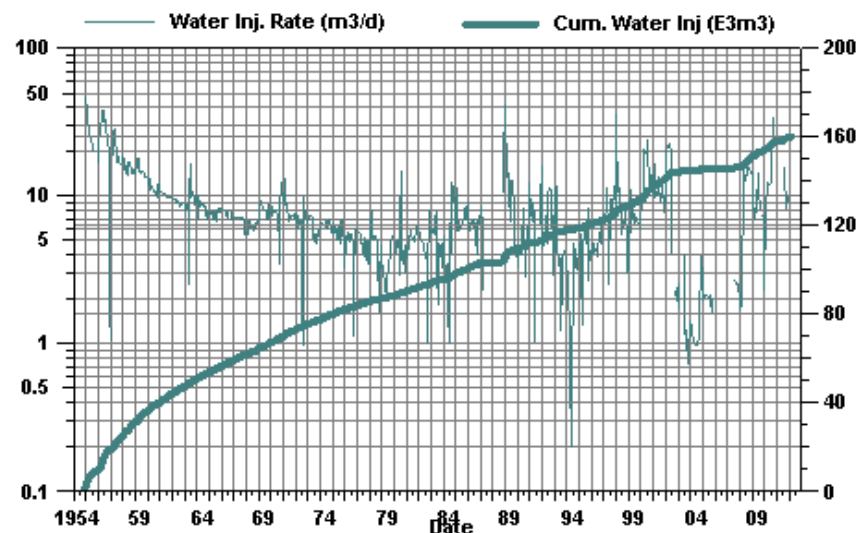
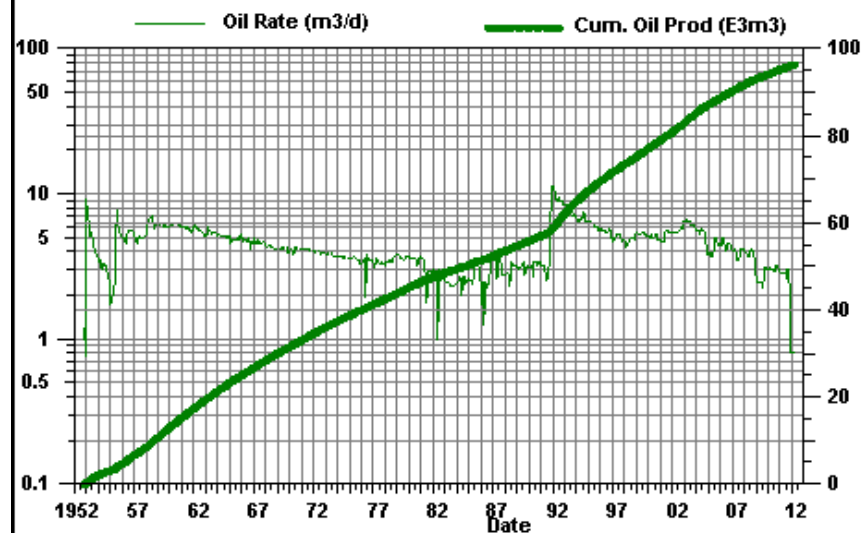
Daly Unit #3 PAT 11-13



Daly Unit #3 PAT 12-11



Daly Unit #3 PAT 12-12



Daly Unit #3 PAT 10-01

